

# Iconographic Sources of Swedish Campaign in 1647 in Bohemia

*Results and perspectives of an interdisciplinary research*

Ing. Tomáš JANATA  
Ing. Růžena ZIMOVÁ, Ph.D.

Wien, 2015

Czech Technical University in Prague  
FCE, Dept. of Geomatics





# What will be discussed

Introduction of an interdisciplinary project.

Engravings of 1647 thirty-years-war Swedish campaign.

Available cartographical sources.

Involved methods of cartography and cartographical visualization during the research.

Contents of the engravings, their genesis and technical properties.





# Subject of interest

Co-operation of CTU in Prague, Faculty of Civil Eng.  
with Charles University, Faculty of Humanities.

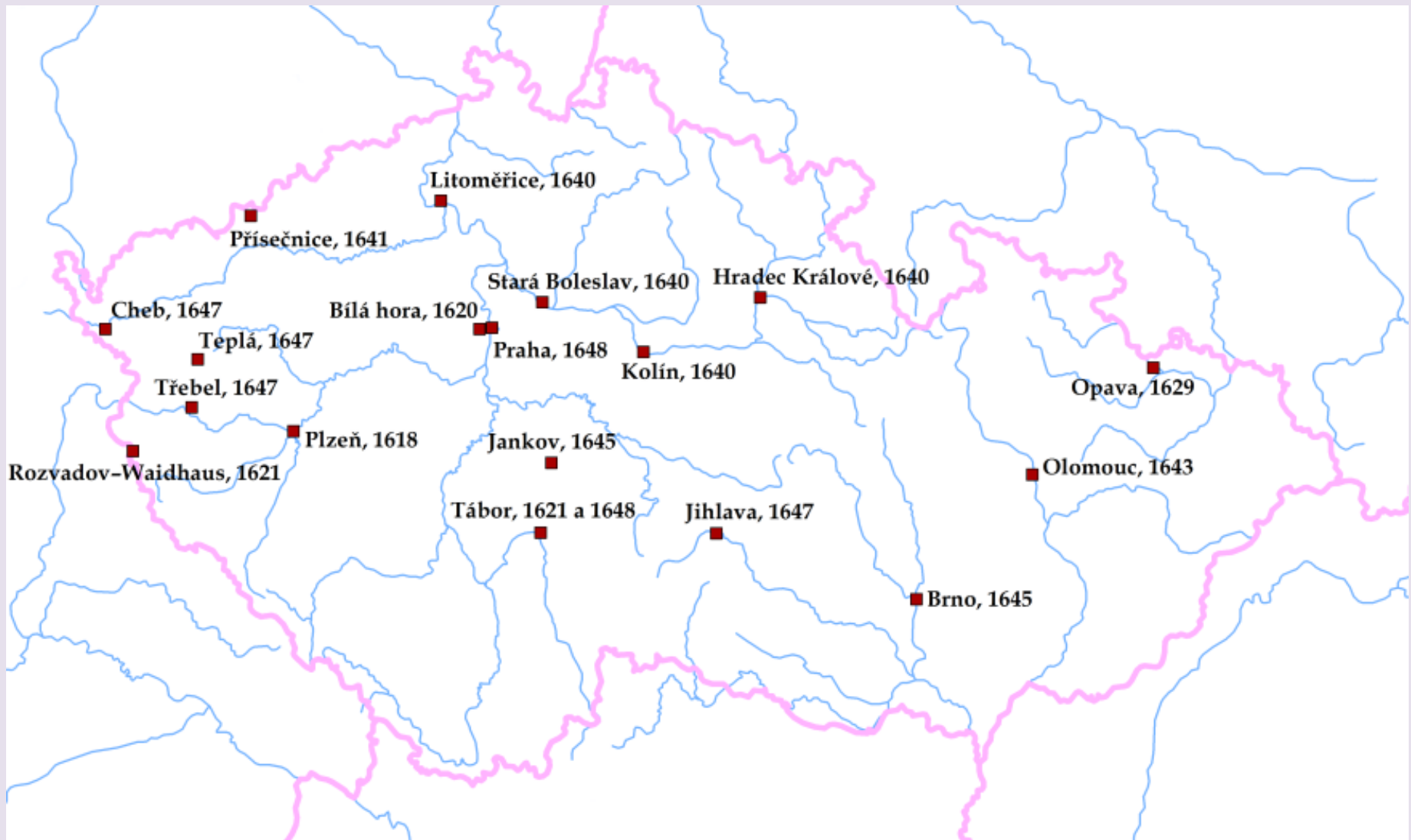
Project focused on systematic research on historical  
engravings of Thirty Years' War depicting battlefields  
or historical towns in Czech lands 1618–48.

Documentary appendices in works *Theatrum Europa-*  
*eum* and *Topographia Bohemiae, Moraviae et Silesiae*.

In oblique view – conceptually between a ground plan  
and a vedute; apart from landscape and settlements,  
also military and fortification elements captured.

A map or only a picture?

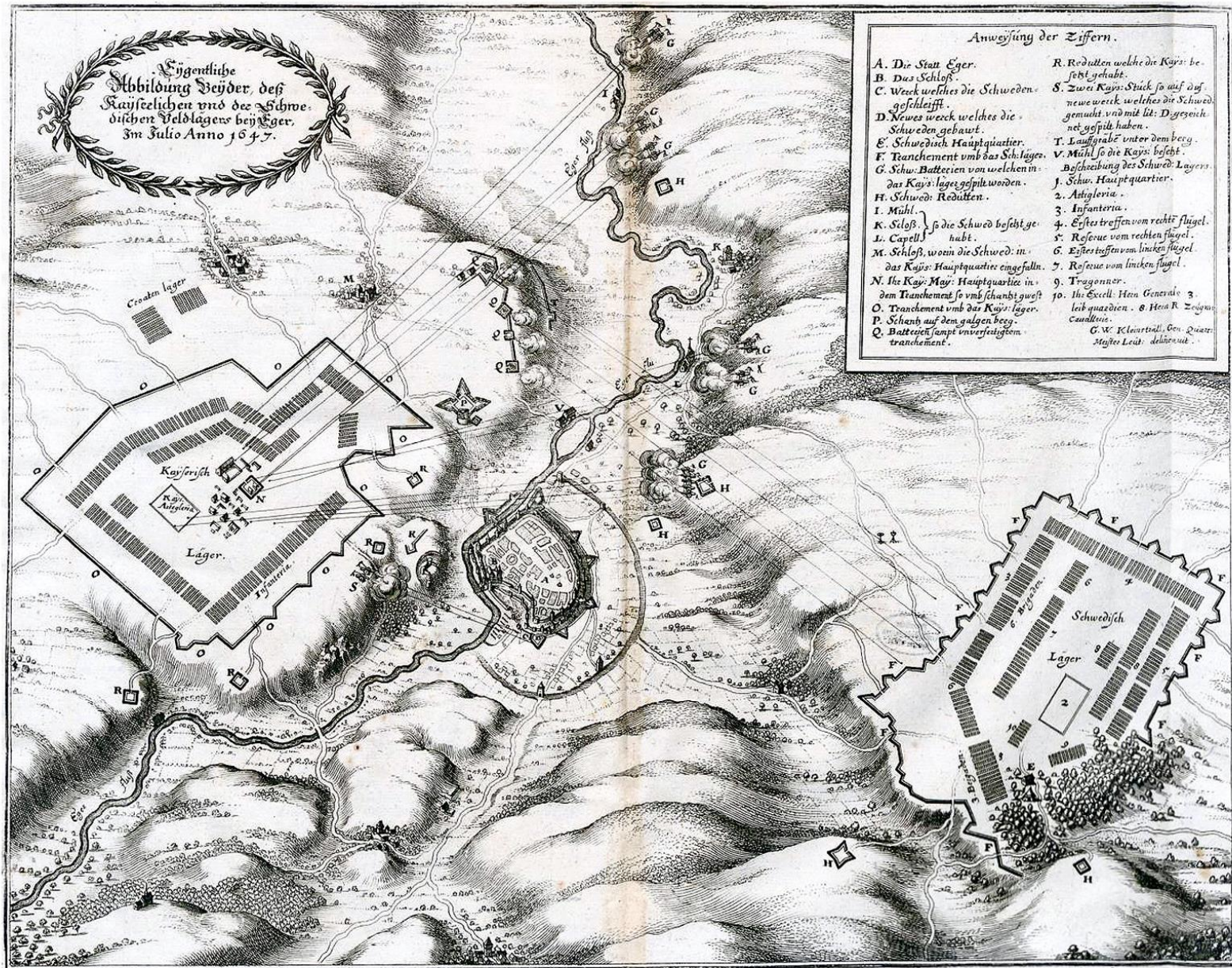




localities of thirty-years-war fights in engravings of  
*Theatrum Europaeum* and *Topographia Bohemiae, Moraviae et Silesiae*



# The siege of Cheb 1647



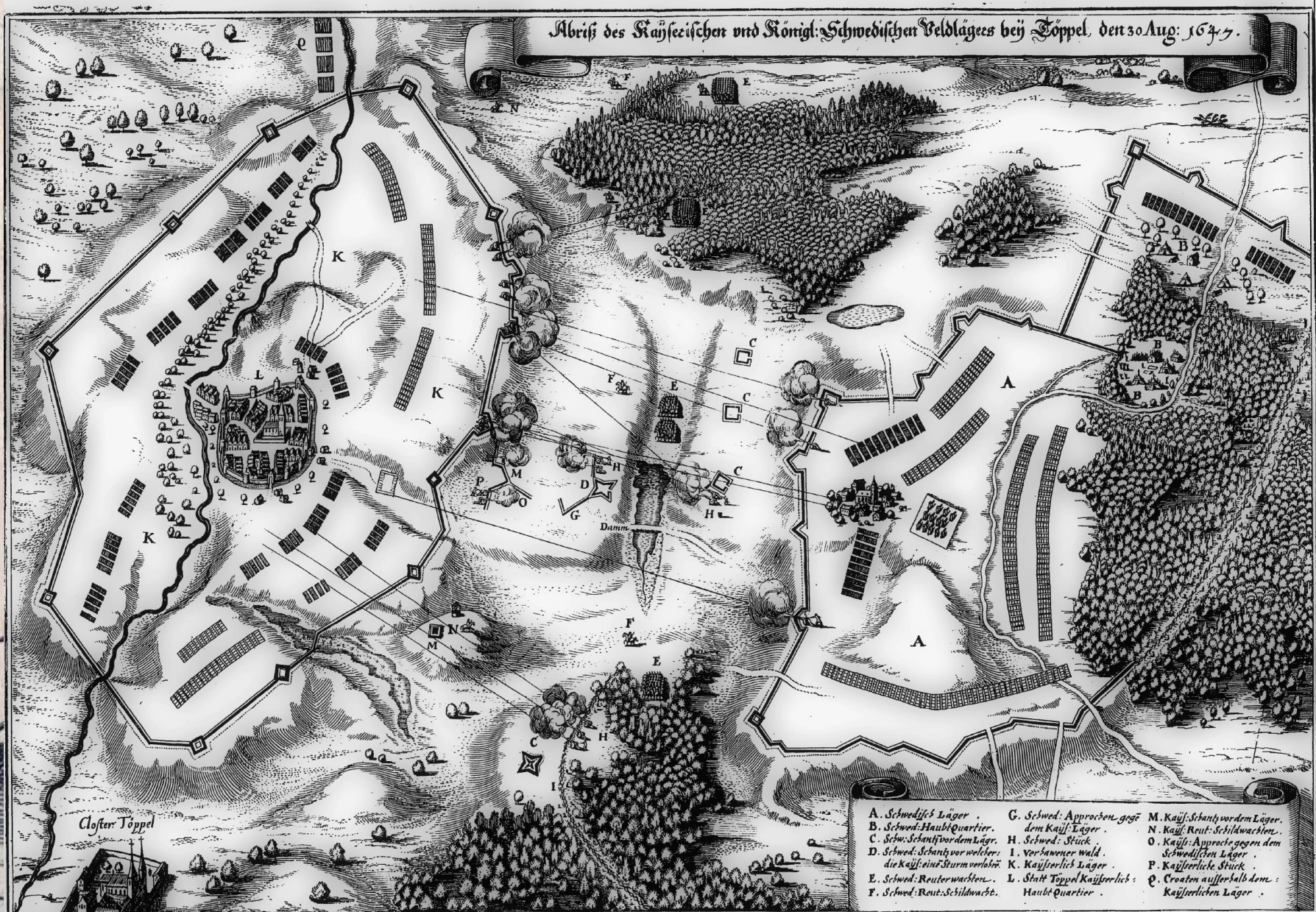


# Battle under the Třebel castle 1647





# Battle by Teplá 1647





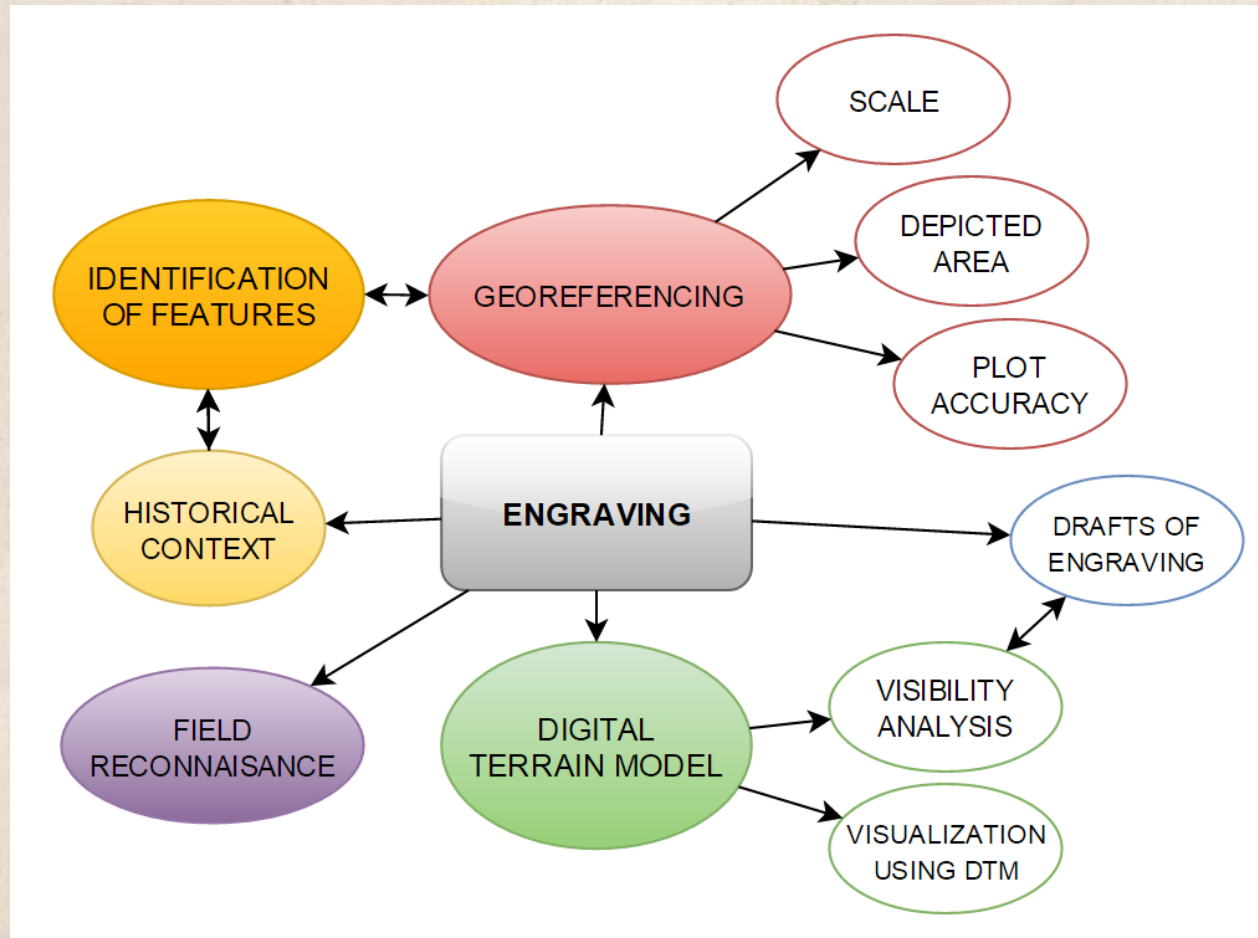
# Methodology

- Description of the engraving basic data, historical context;
- Comparison with other depictions of the loc. in available cartographic sources – morphology of terrain, hydrography, road network, vegetation, settlements and important objects; military and fortification elements;
- Possible ways of genesis of templates existence of period (carto)graphical sources or fortification plans, estimation of location of probable observational points suitable for the area depicted, utilization of dig. terrain model for determination of visibility options, approximate scale number estimate;
- Vectorization of selected elements of the engraving's content and their vizualization over DTM.





# Methodology



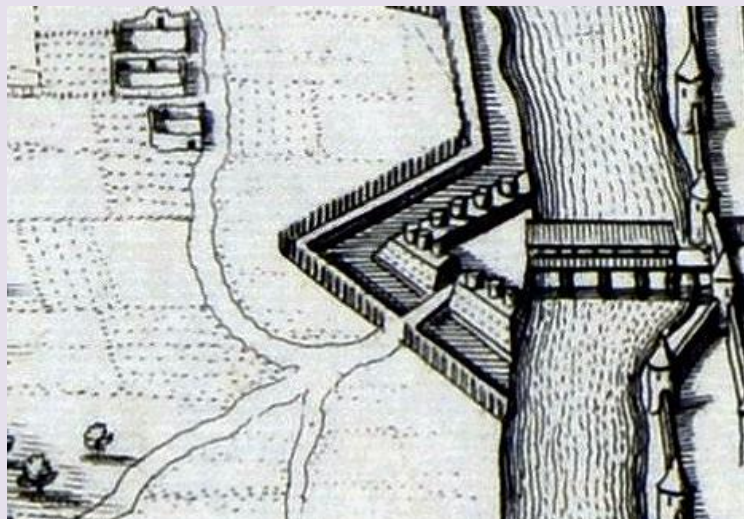
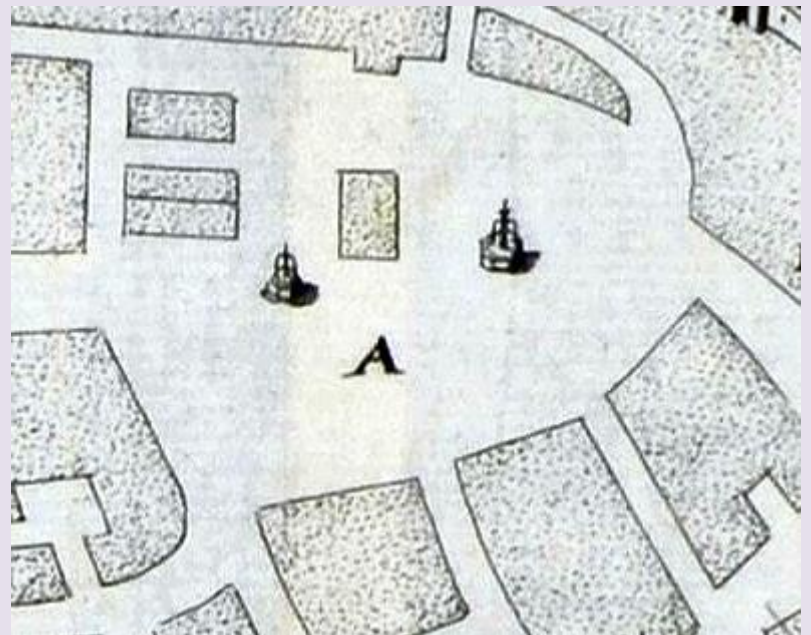
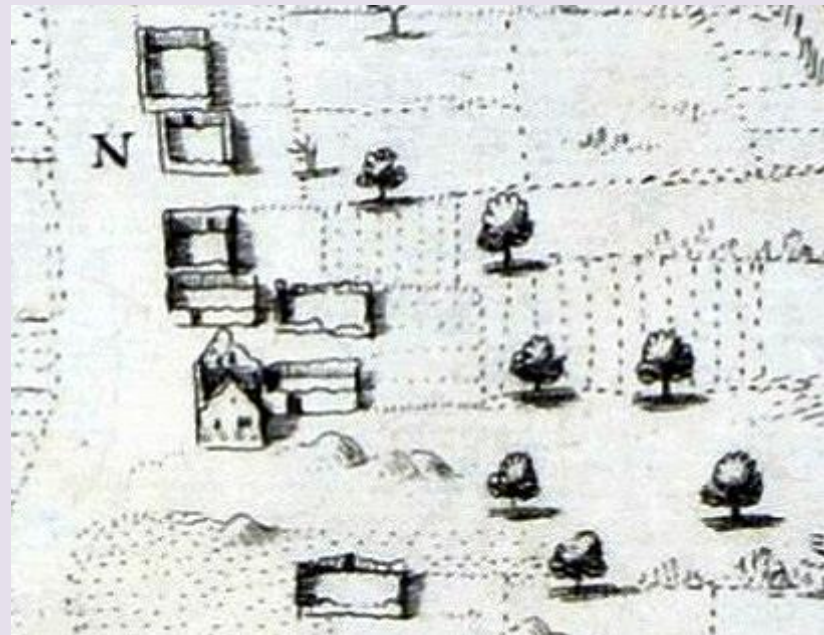
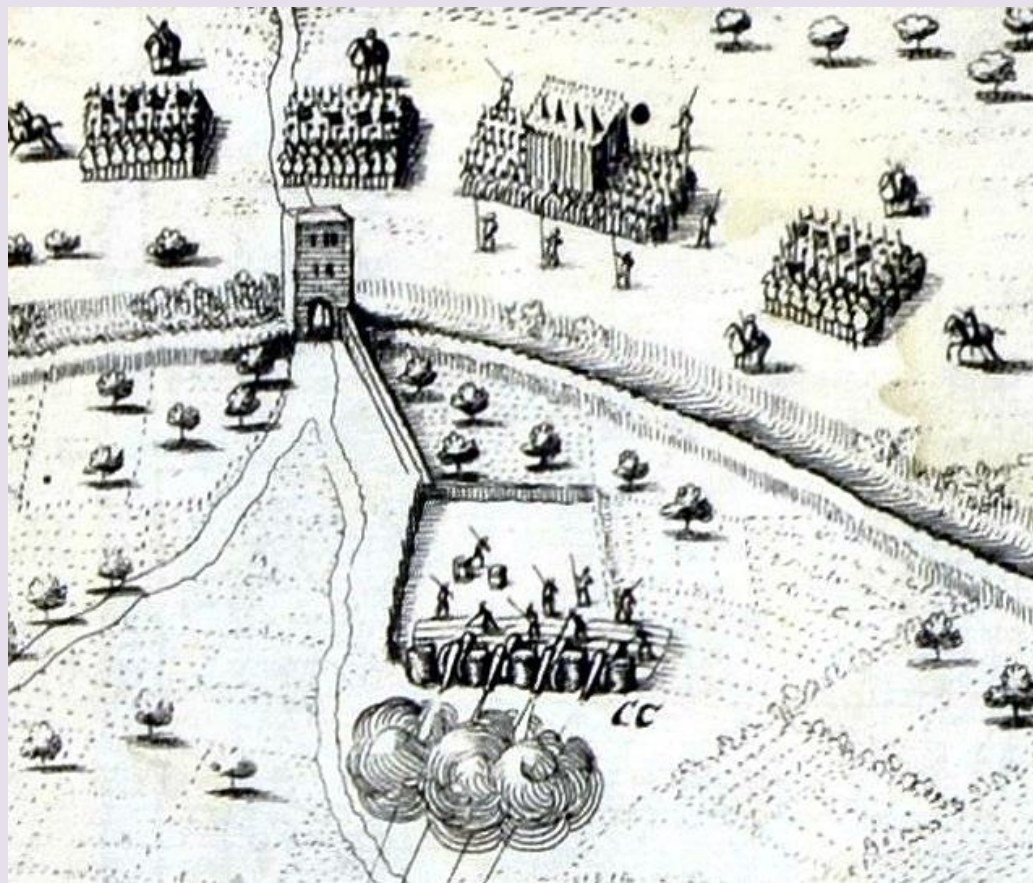


# Theatrum Europaeum



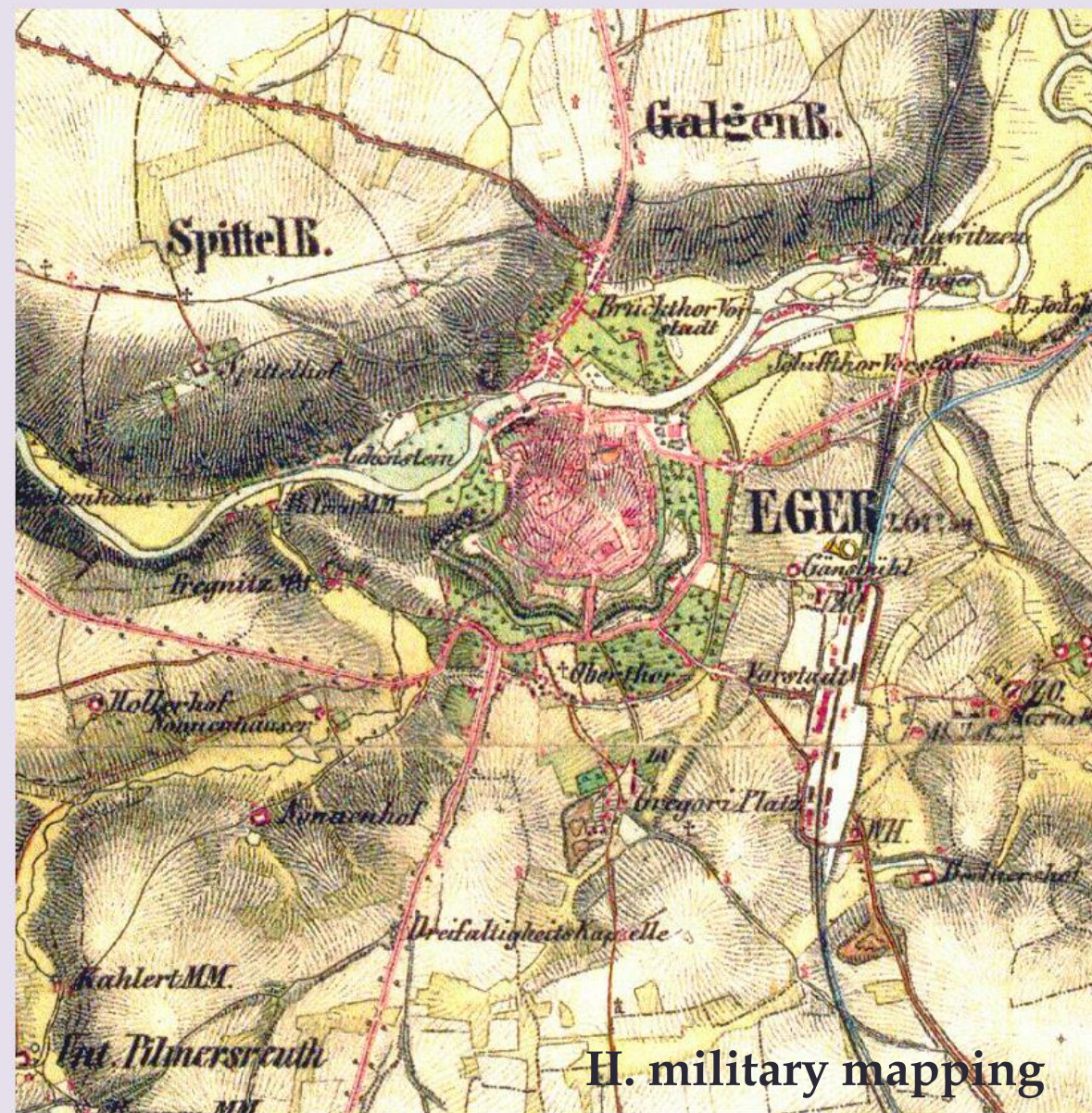






cut-outs of  
engravings



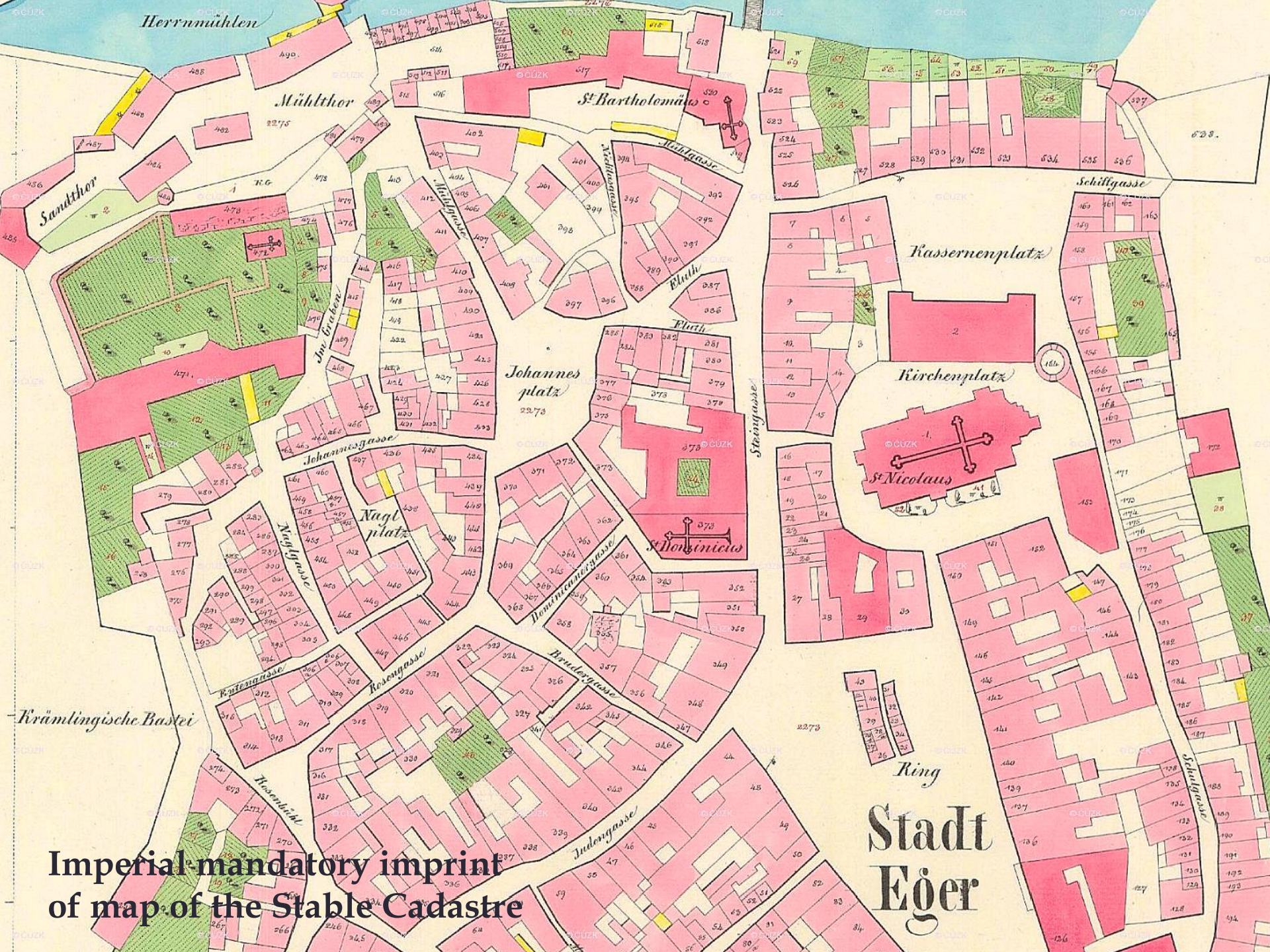


H. military mapping



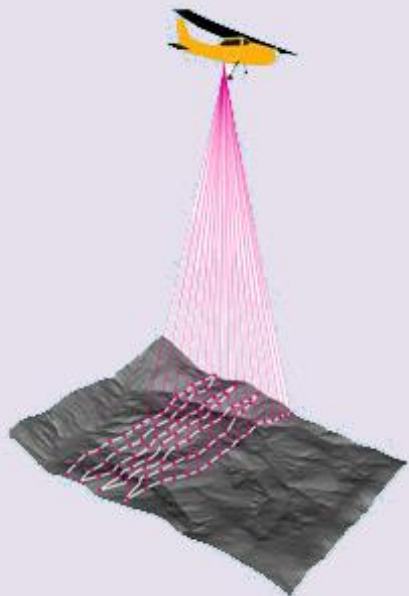
I. military mapping





Imperial-mandatory imprint  
of map of the Stable Cadastre

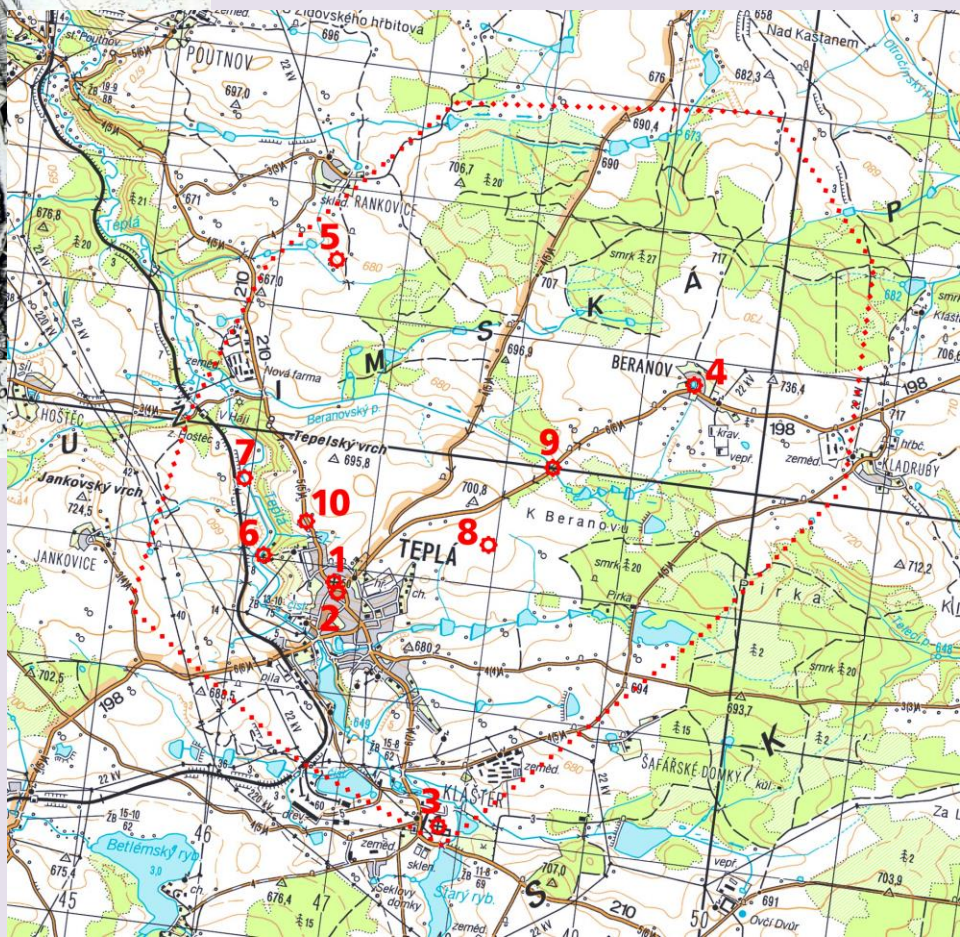
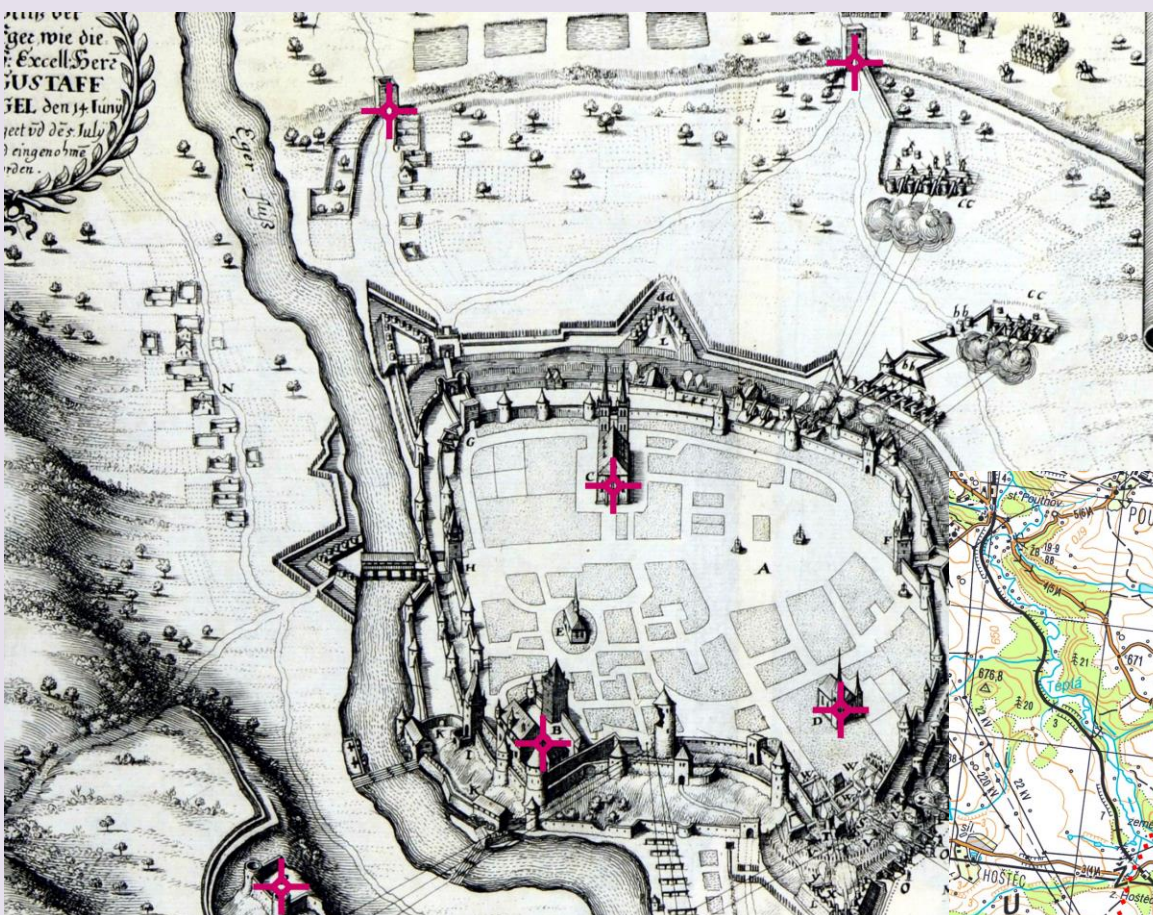




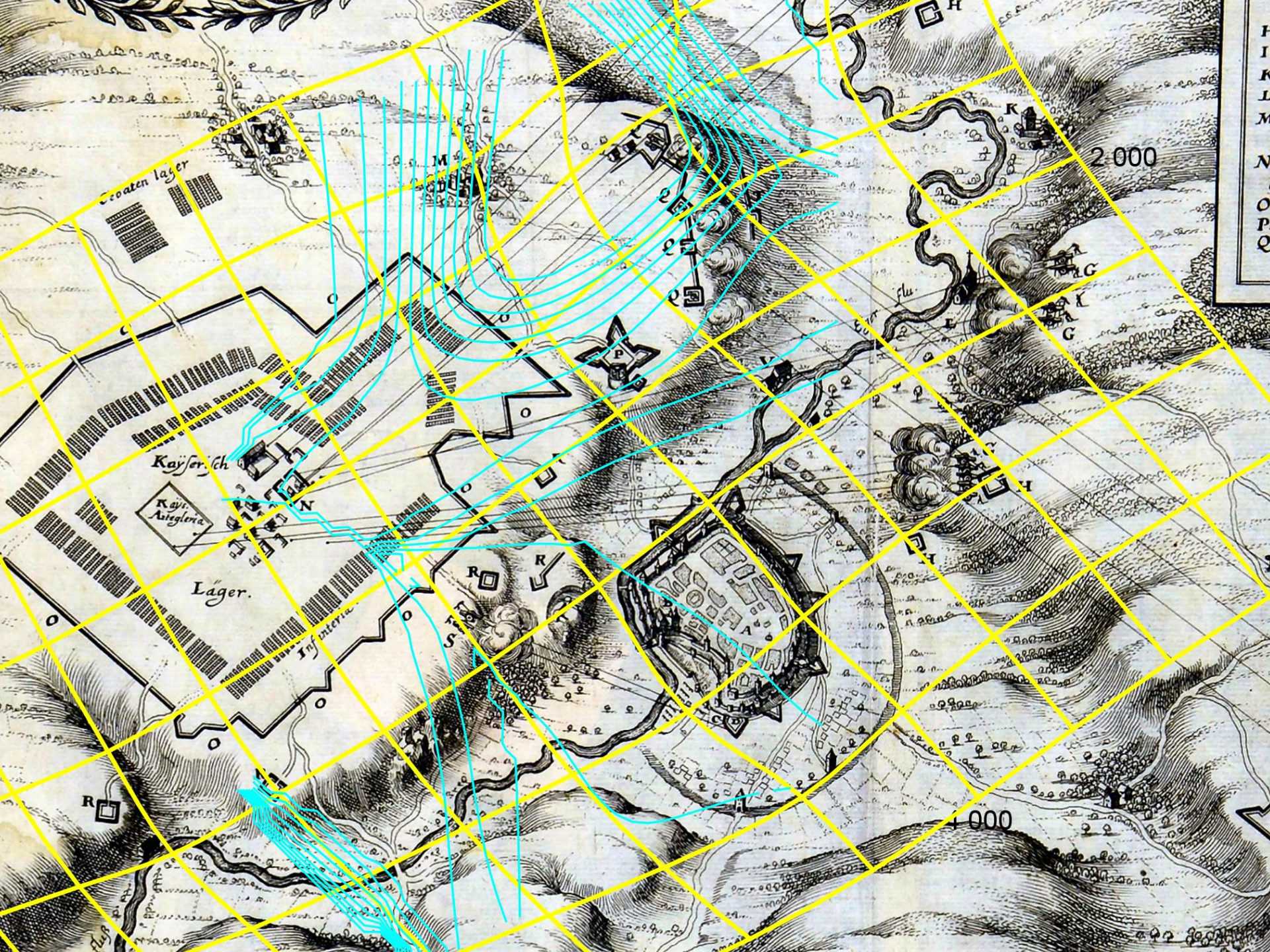
centre of  
Cheb (Eger)  
on DMP 1G -  
digital surface  
model



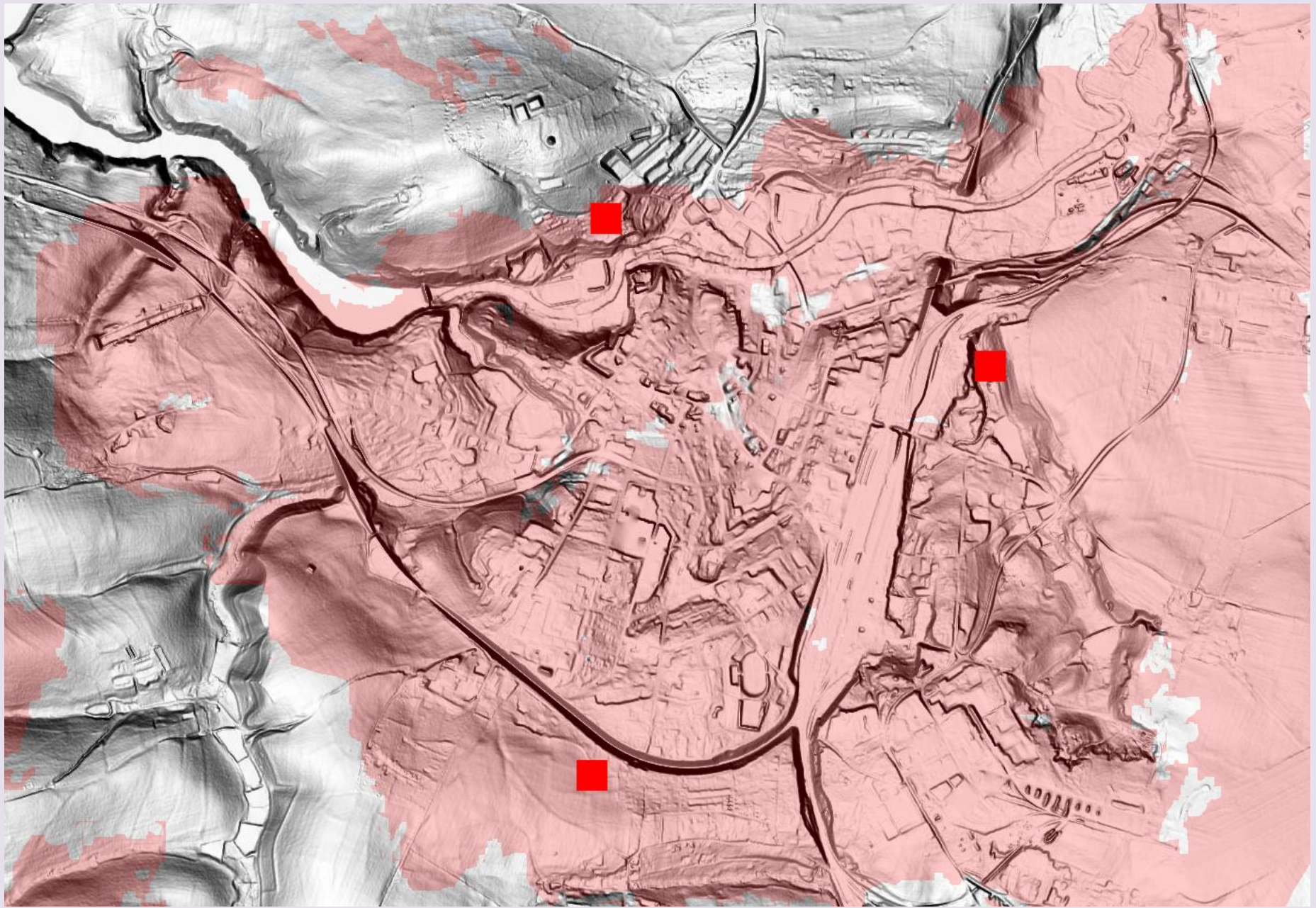






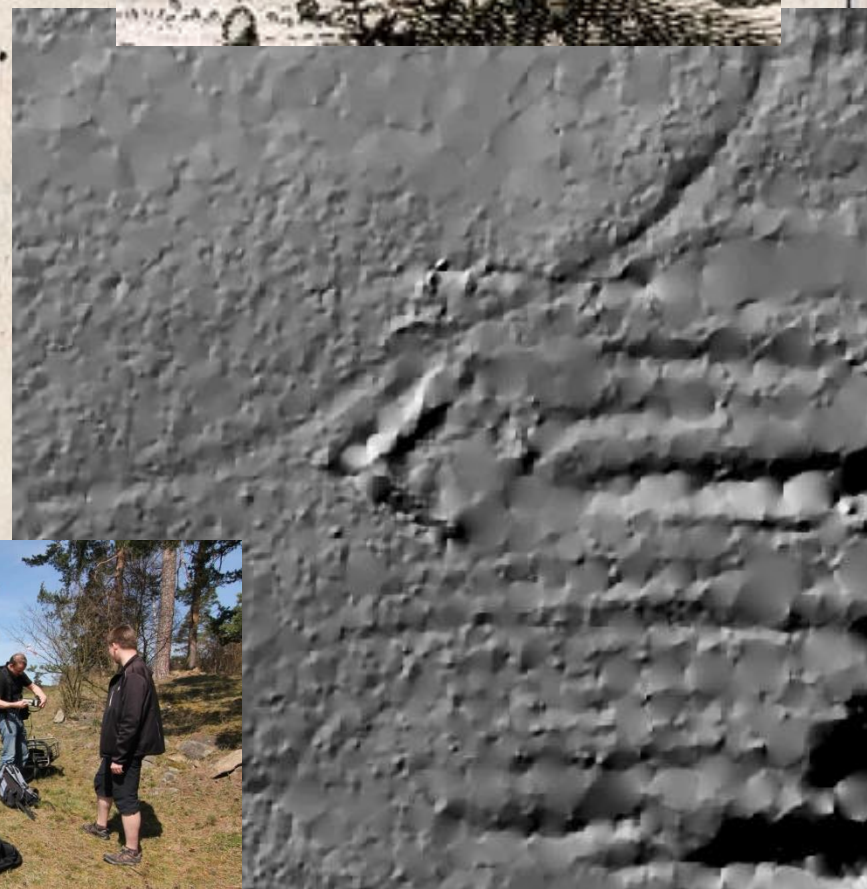
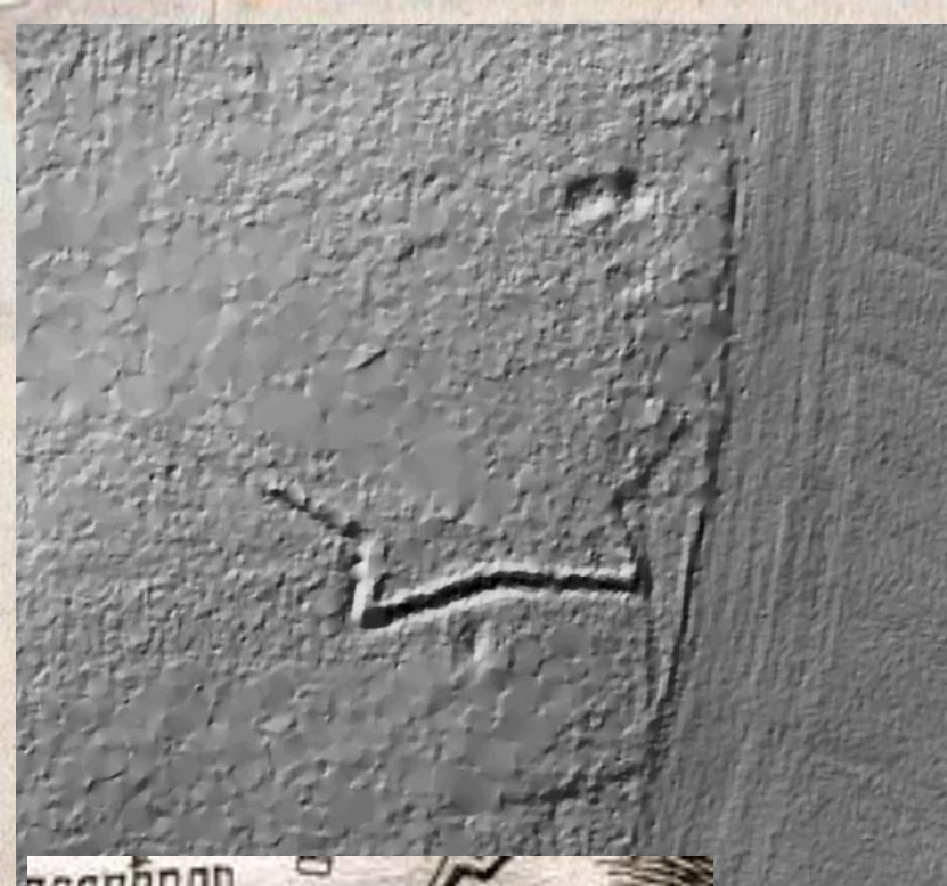






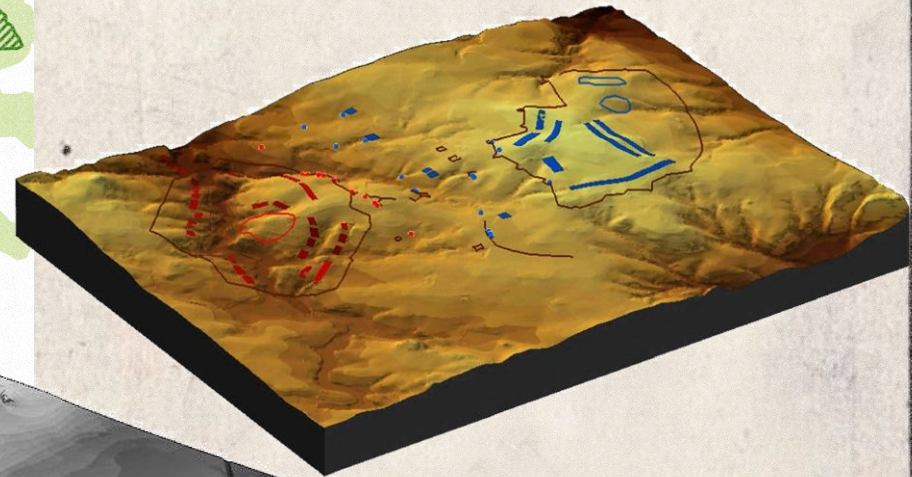
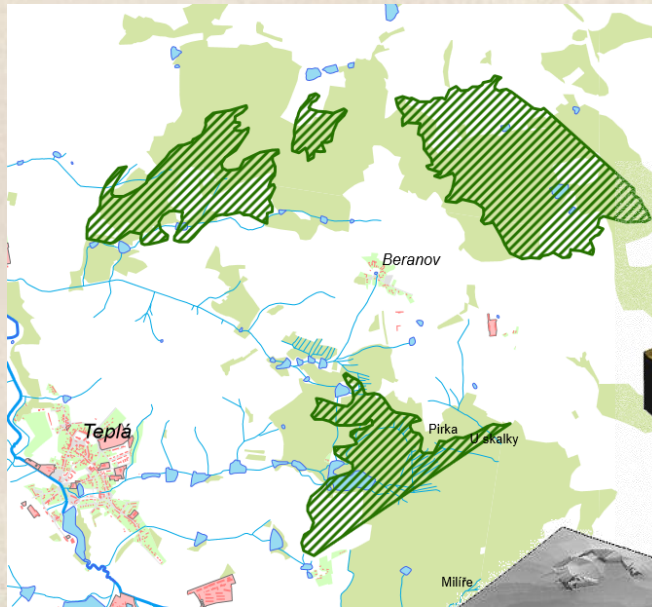
**solution of visibility from estimated elevated localities**







# Vizualization of selected elements of the content





# Further heading

Situating the set into context of the then possibilities and status quo of cartographic creation.

Processing the exact methodology of scale estimation of such works.

Verification of the hypothesis, whether it is more about maps or mere documentary images.





# Thank you for your attention

Space for a discussion.



This contribution was financially supported by  
the Grant agency of the Czech Rep., grant No. GA15-03380S

*Transformed land: interdisciplinary research on influence of the Thirty Years' War  
on rural landscape of Bohemia*