

Challenging Cartography in ArcGIS from Esri Switzerland

Anna Vetter, Mark Wigley

Esri Switzerland Ltd.

1st ICA European Symposium on Cartography

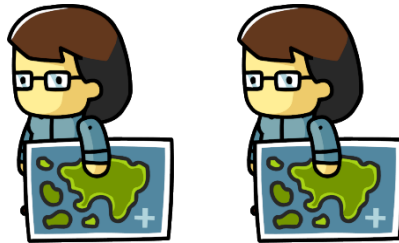
10 – 12. November 2015

Why Esri Switzerland and Cartography?

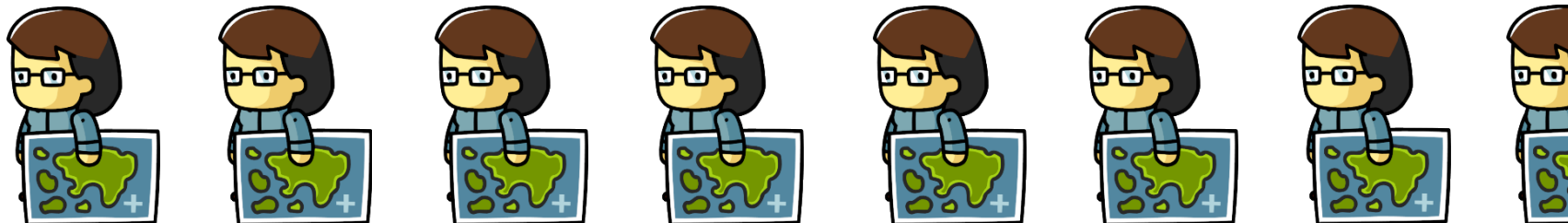
- + **Triggered:** by a long term and close working partnership with swisstopo



- + **Supported:** by numerous Cartographers



- + **Enriched:** through various customer projects



What we Offer!

ProSuite Solution



Quality Assurance



Carto-Tools



ArcGIS



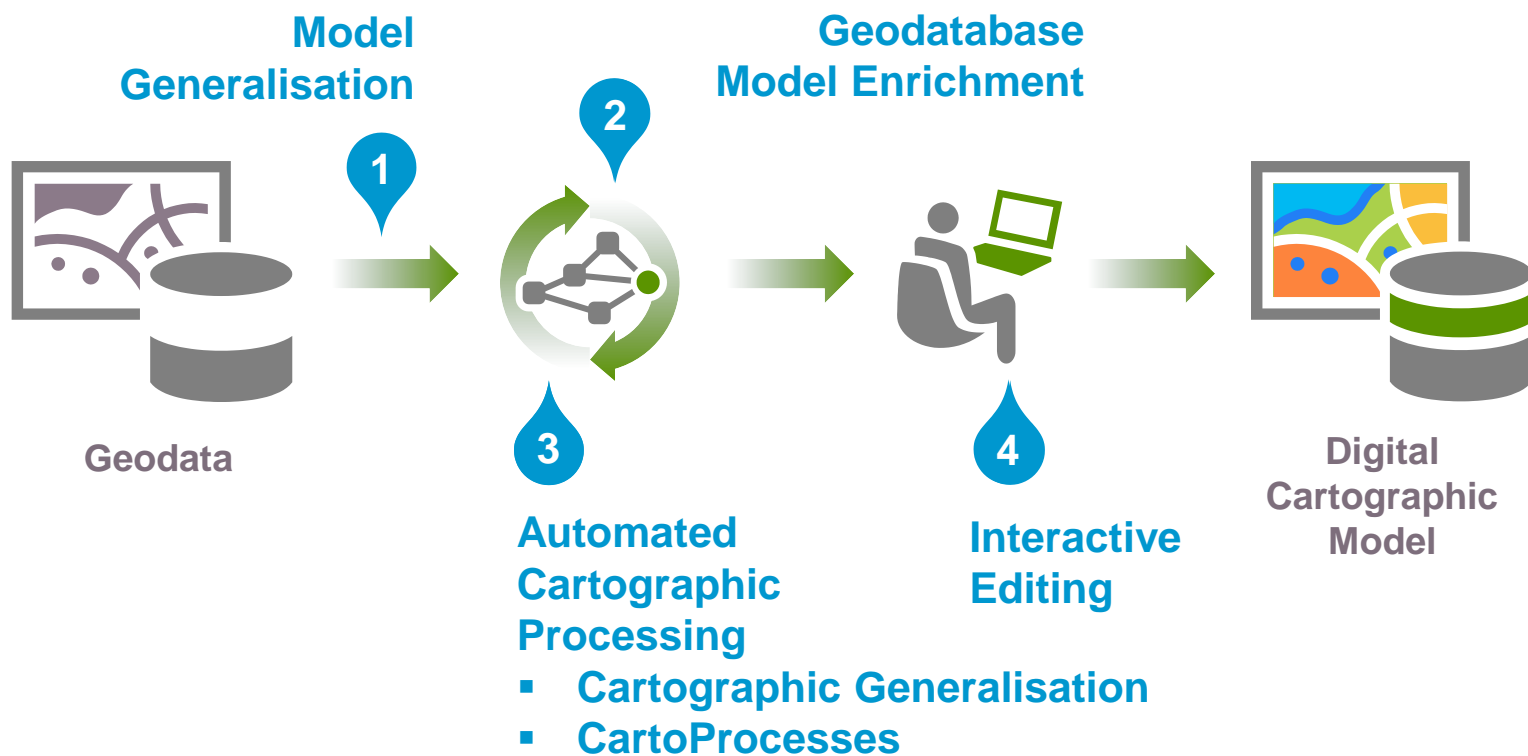
**Installation, Configuration
Set-Up**



**Consulting, Programming
Training, Support**

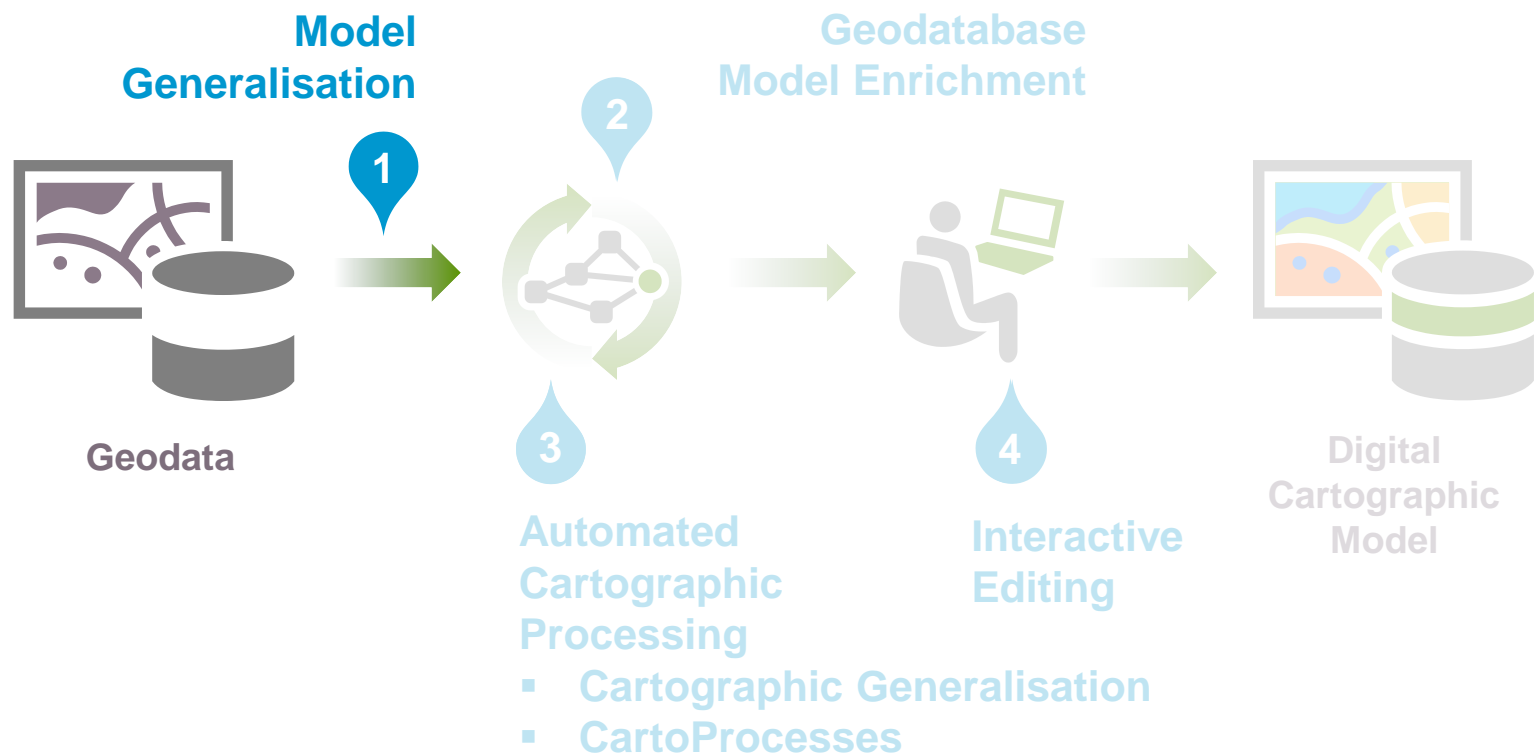
Challenging Cartography within a single system

Quality Control

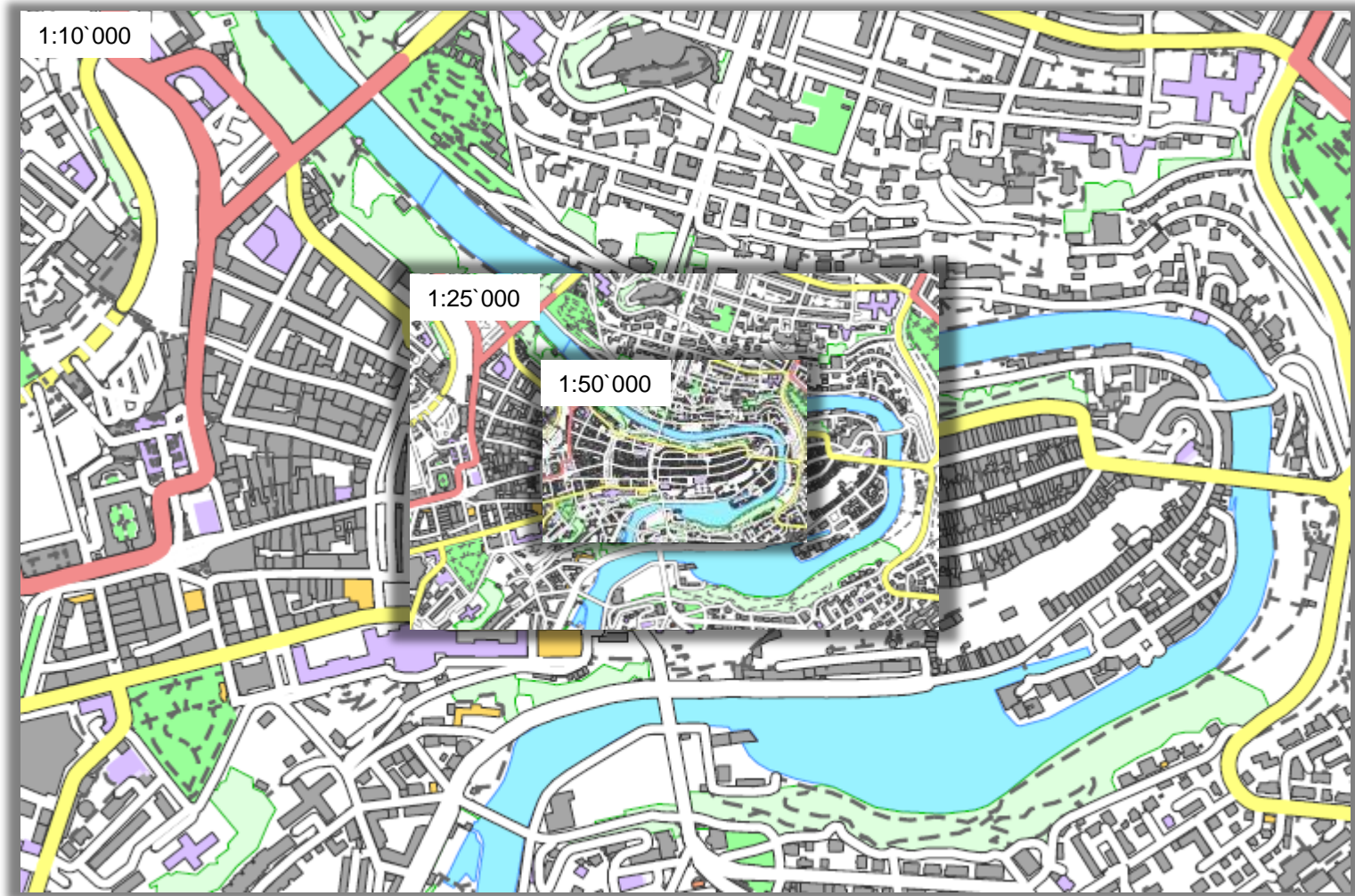


1 Model Generalisation

Quality Control



Why generalise?

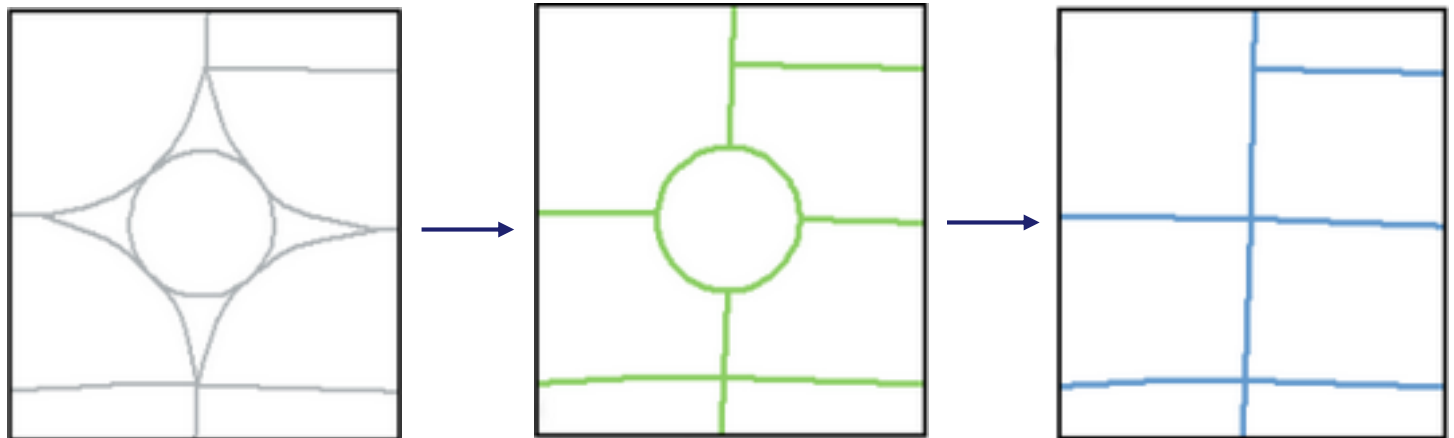


1 Model Generalisation: Roads

+ Thin Road Network Tool

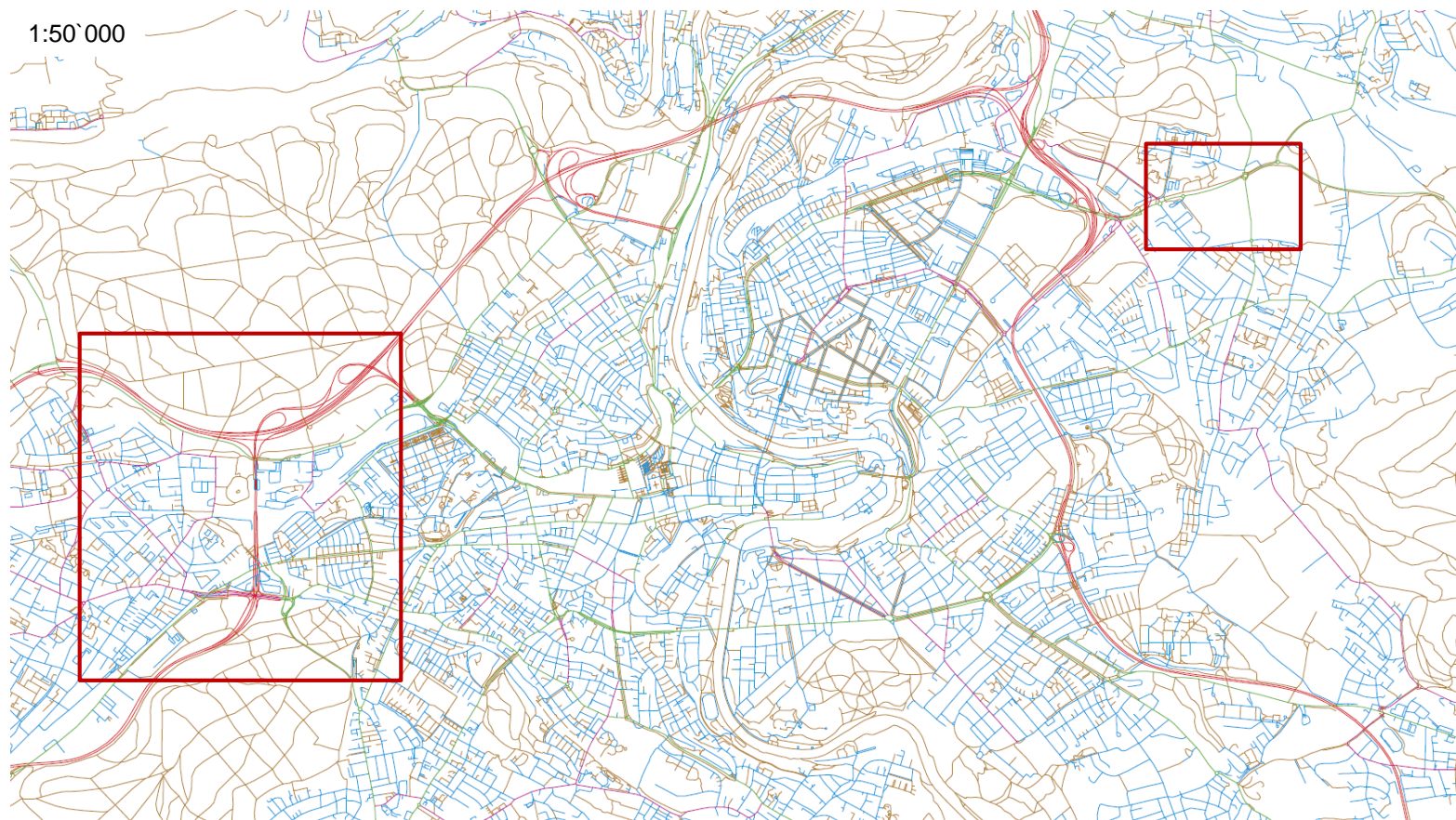


+ Collapse Road Detail Tool



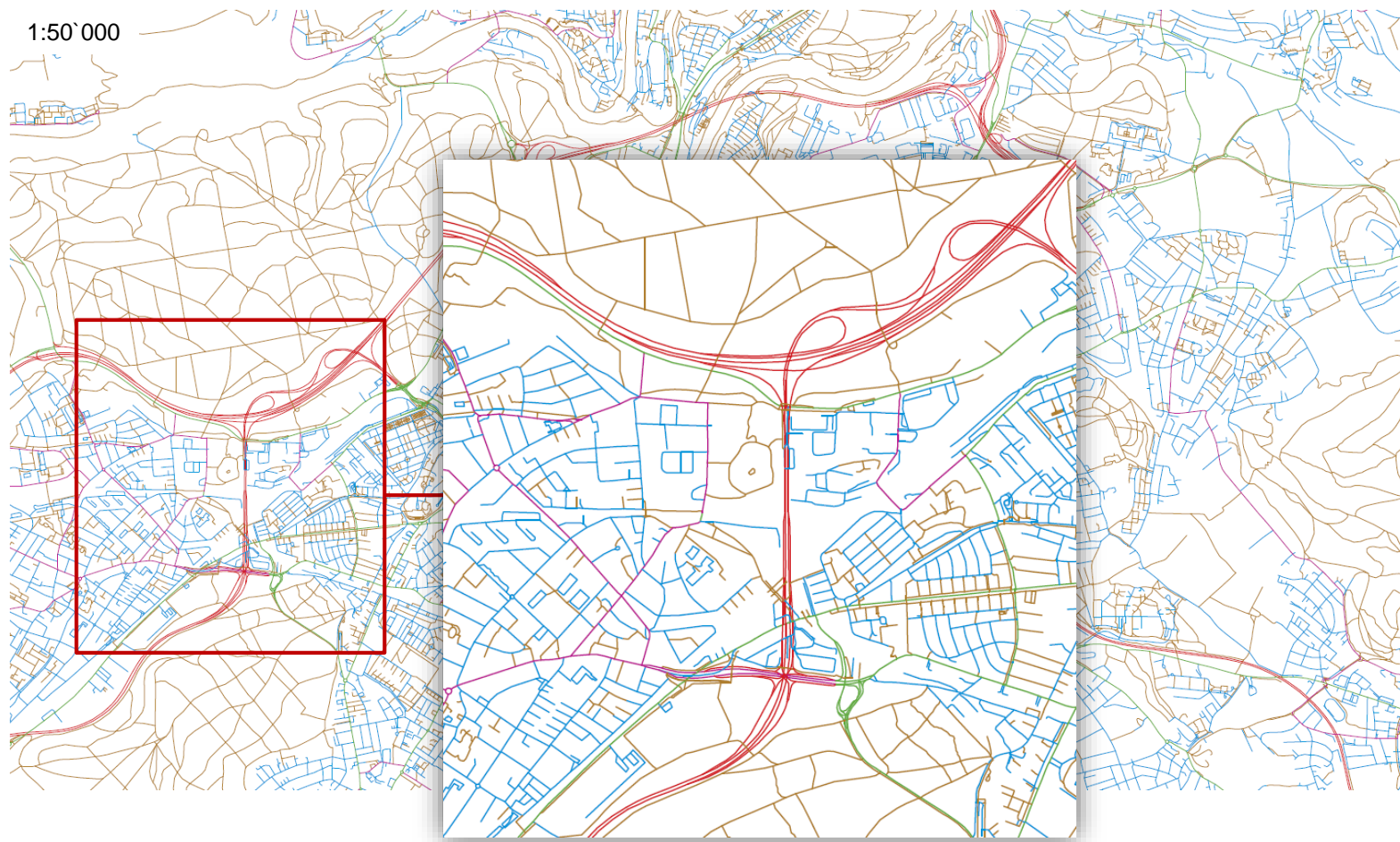
1

Model Generalisation: Roads



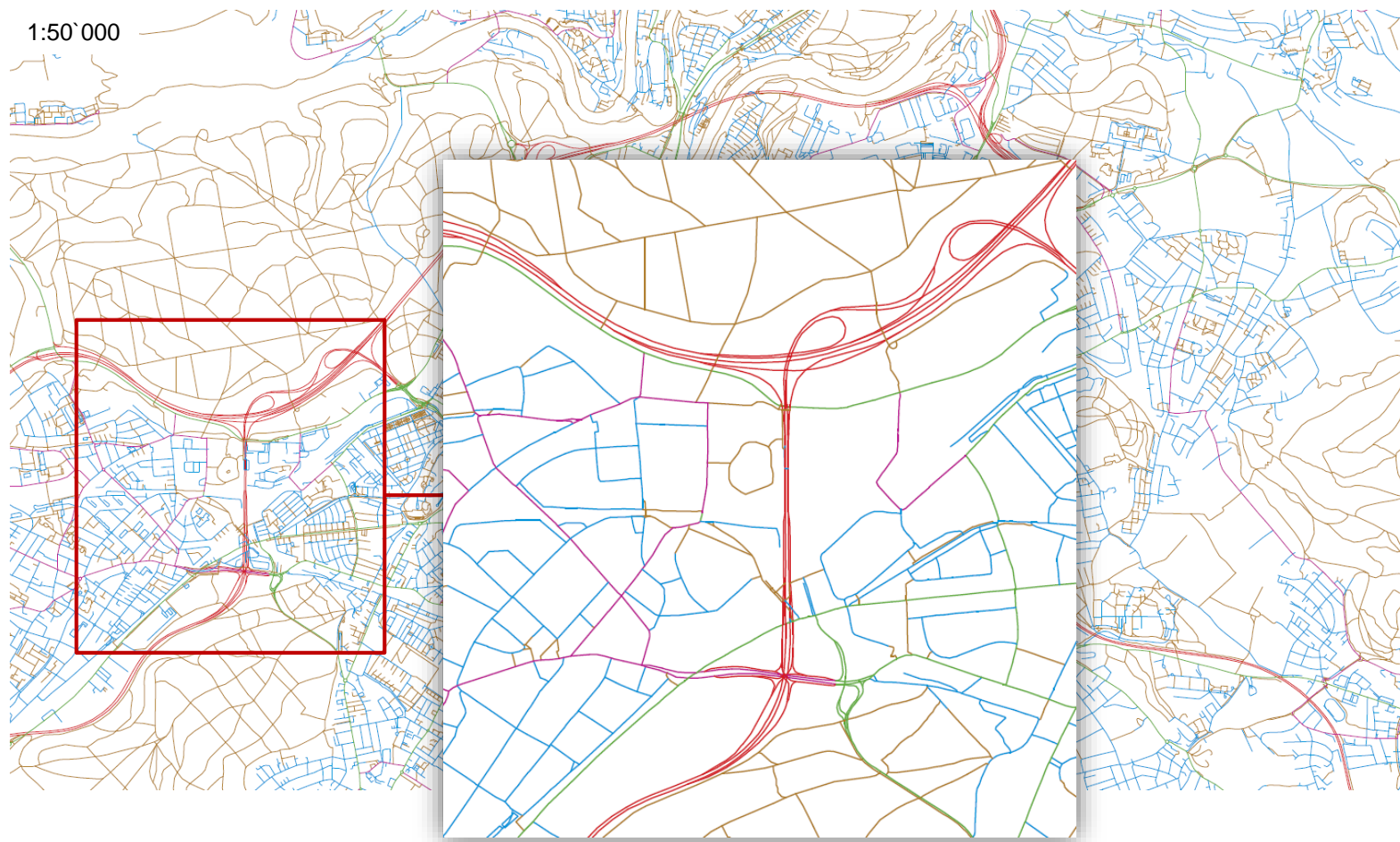
1

Model Generalisation: Roads



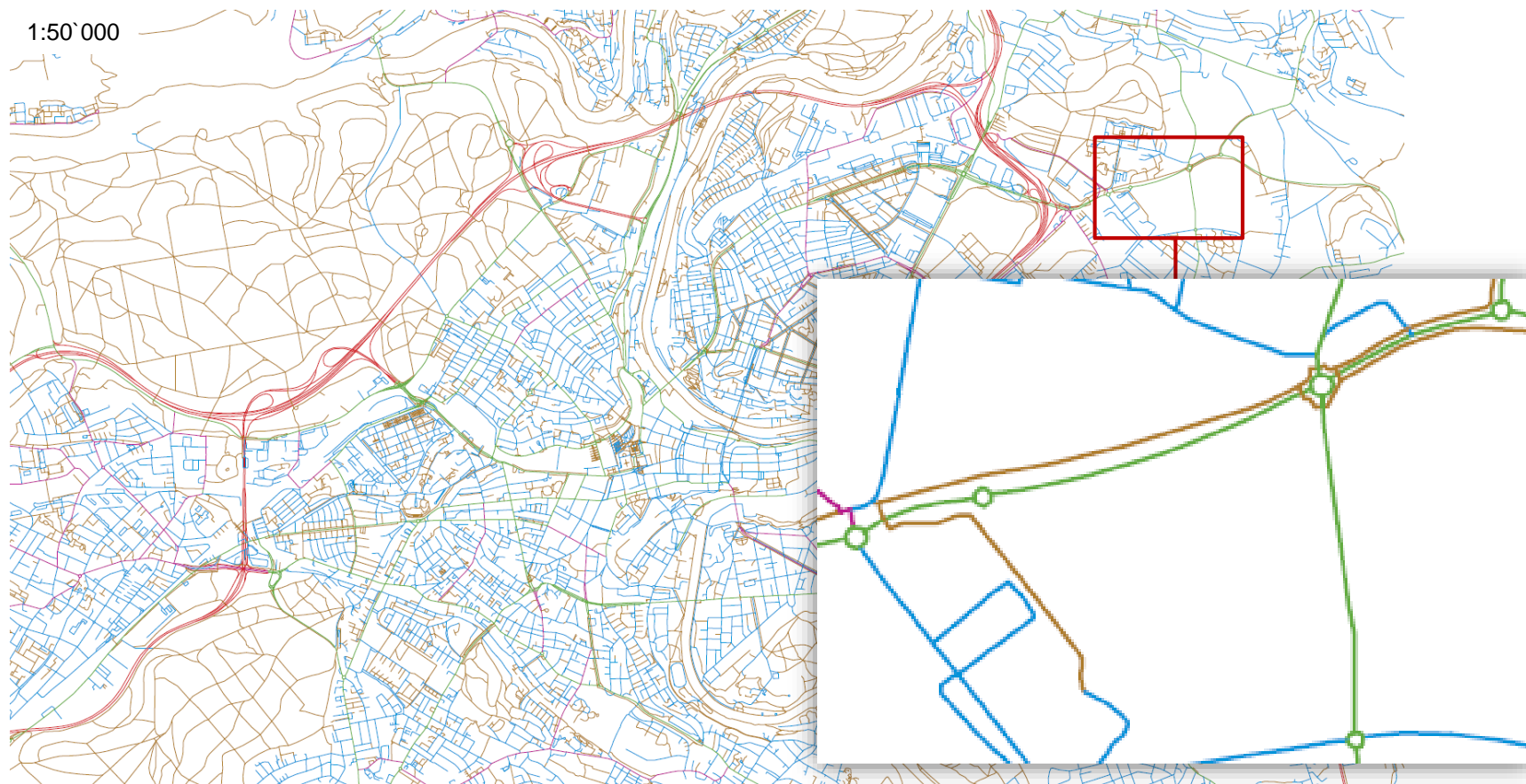


Model Generalisation: Roads



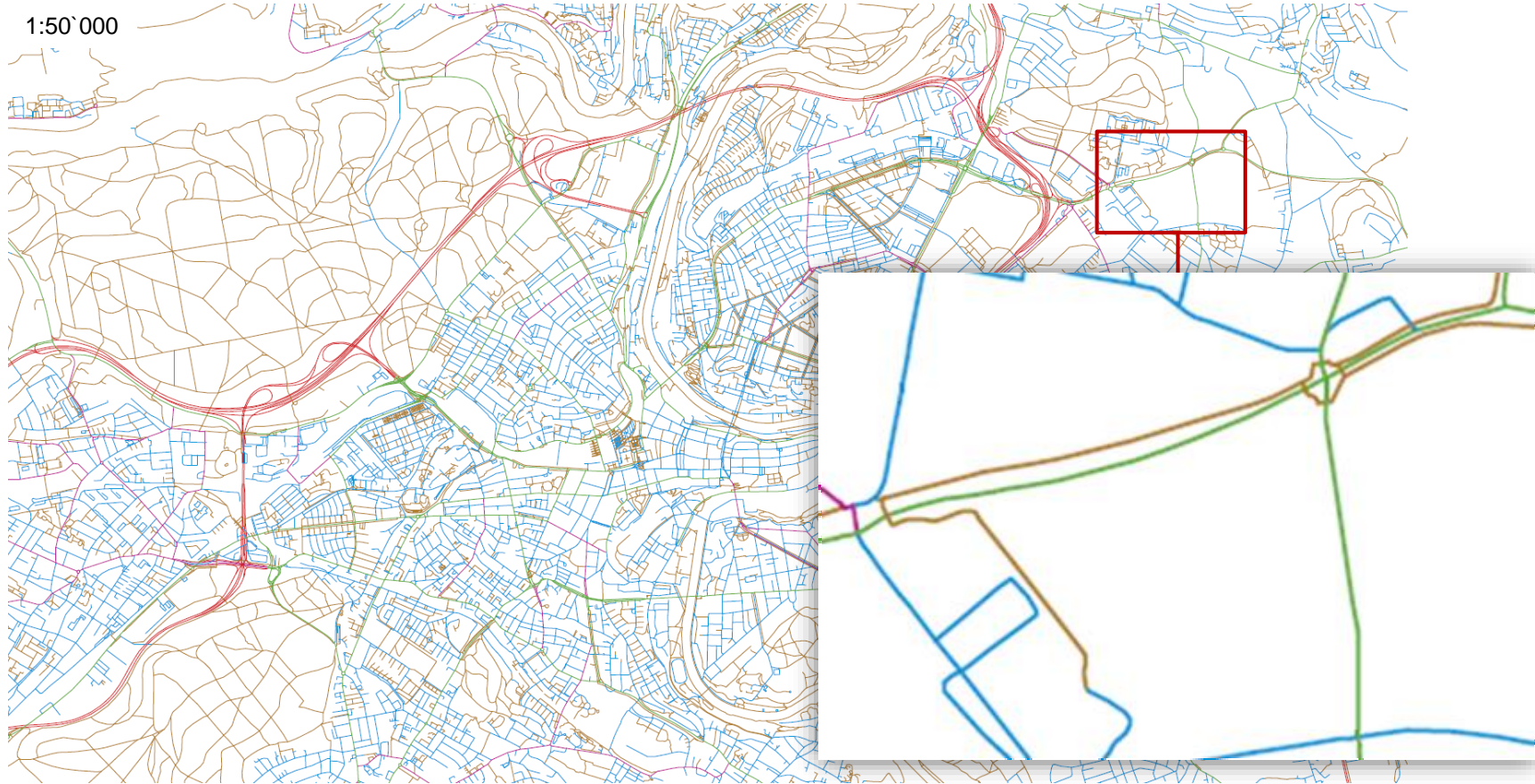
1

Model Generalisation: Roads



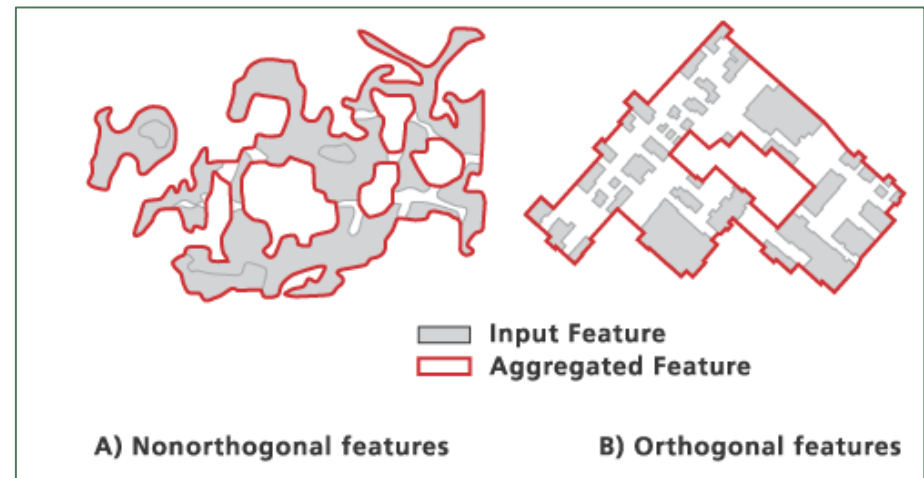


Model Generalisation: Roads

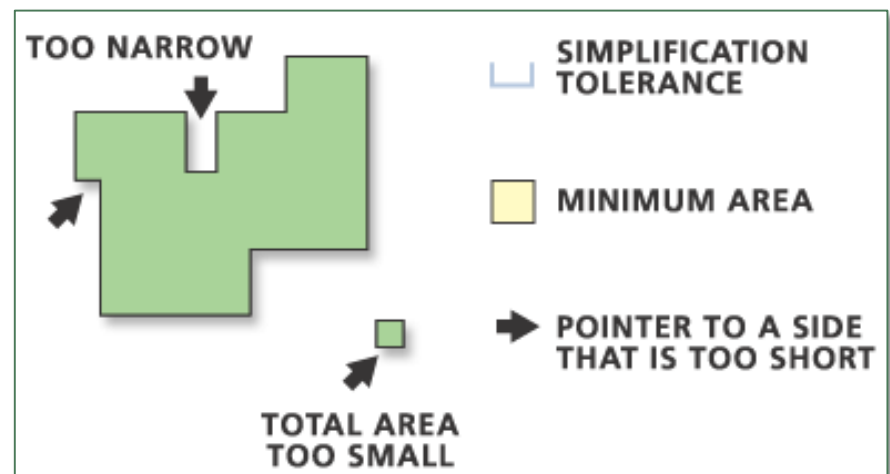


1 Model Generalisation: Buildings

+ Aggregate Polygons Tool

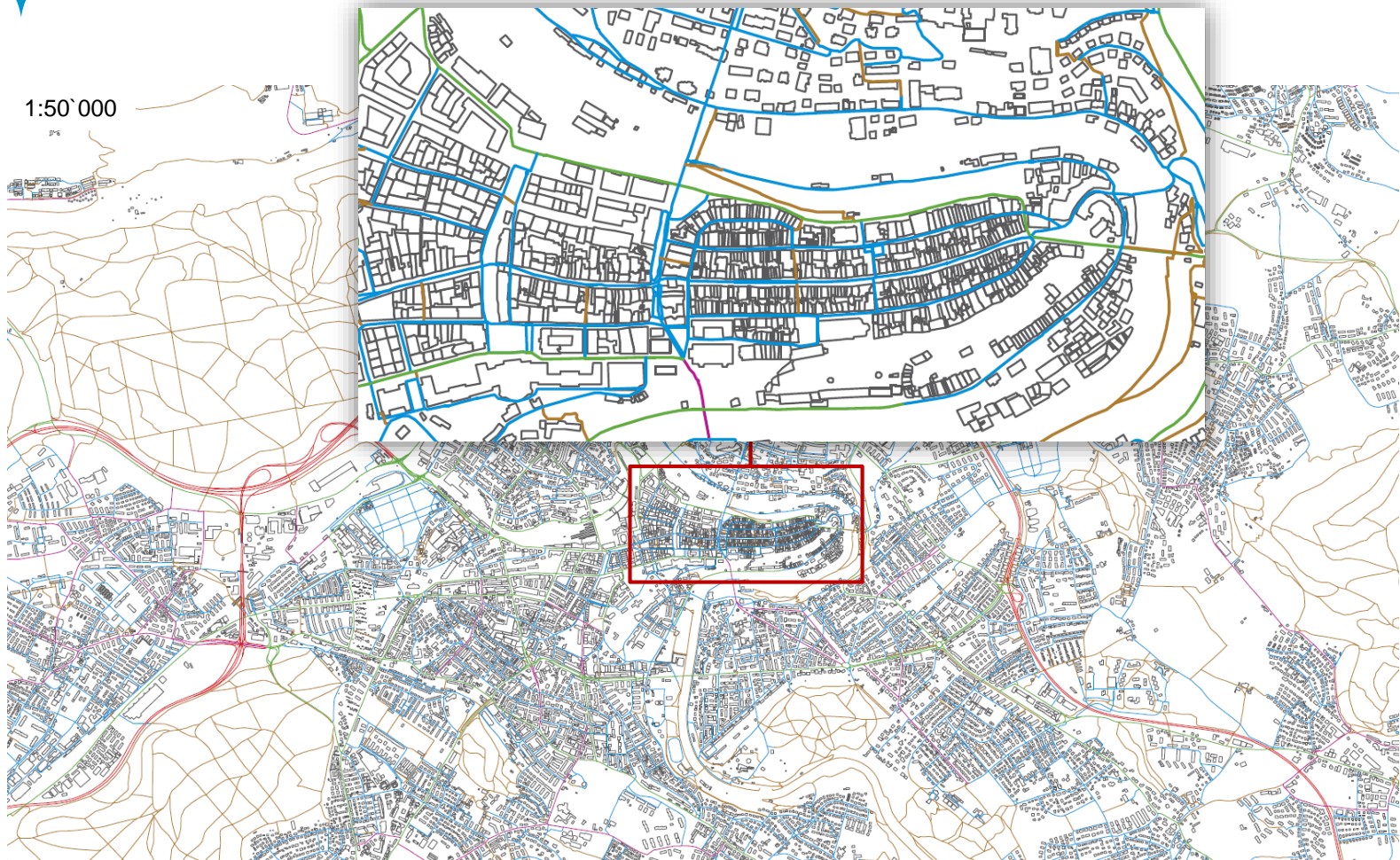


+ Simplify Building Tool



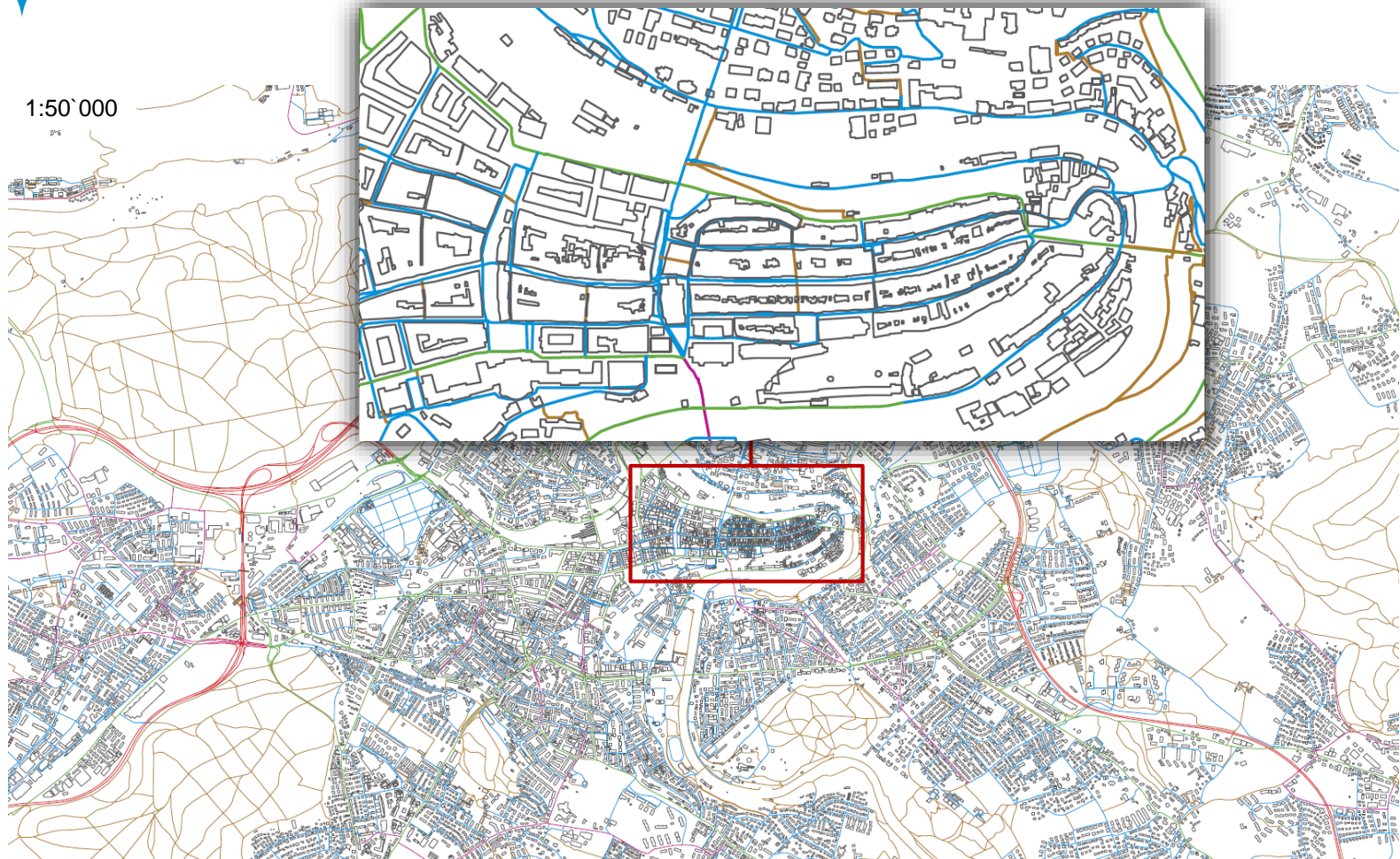
1

Model Generalisation: Buildings



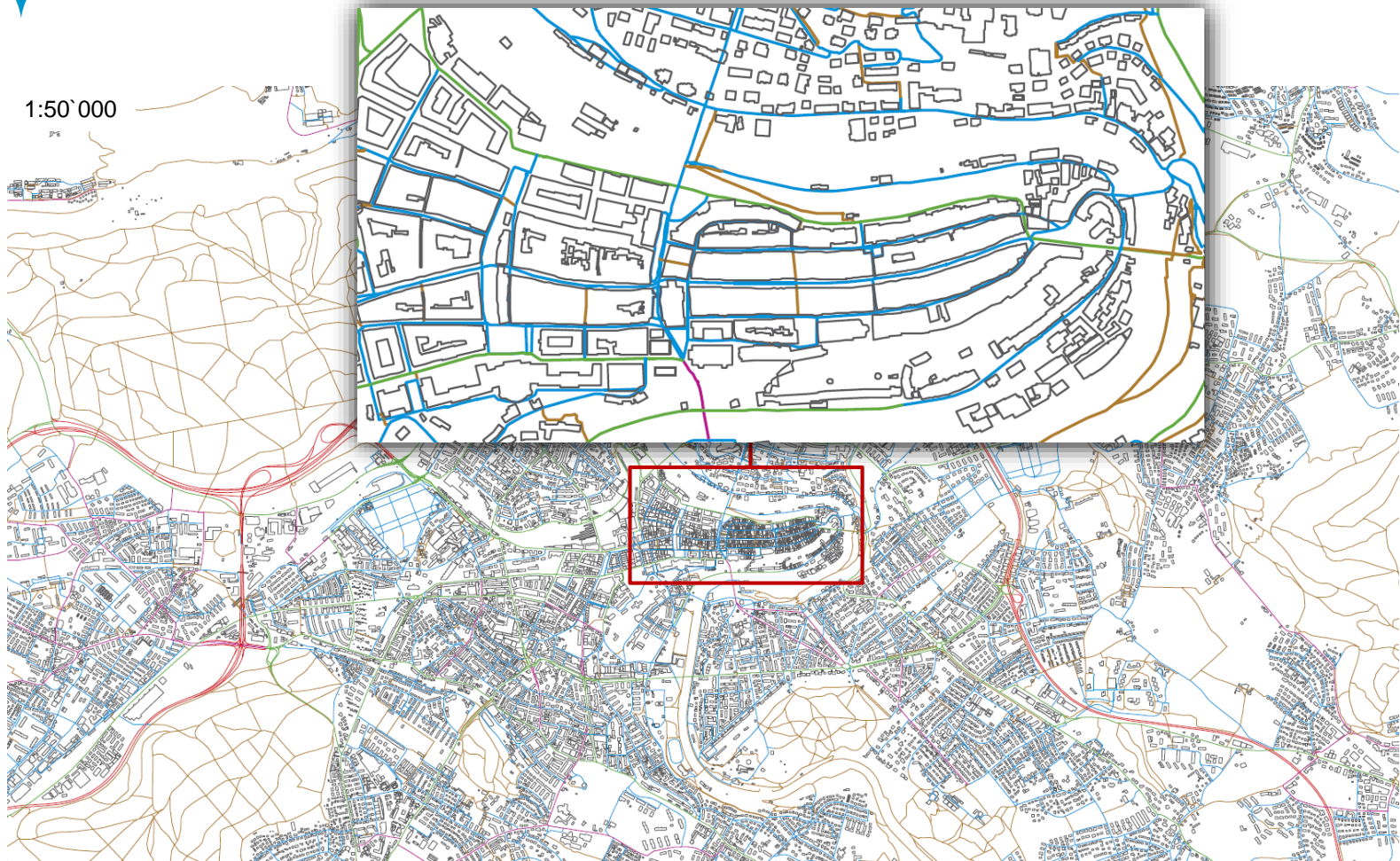
1

Model Generalisation: Buildings



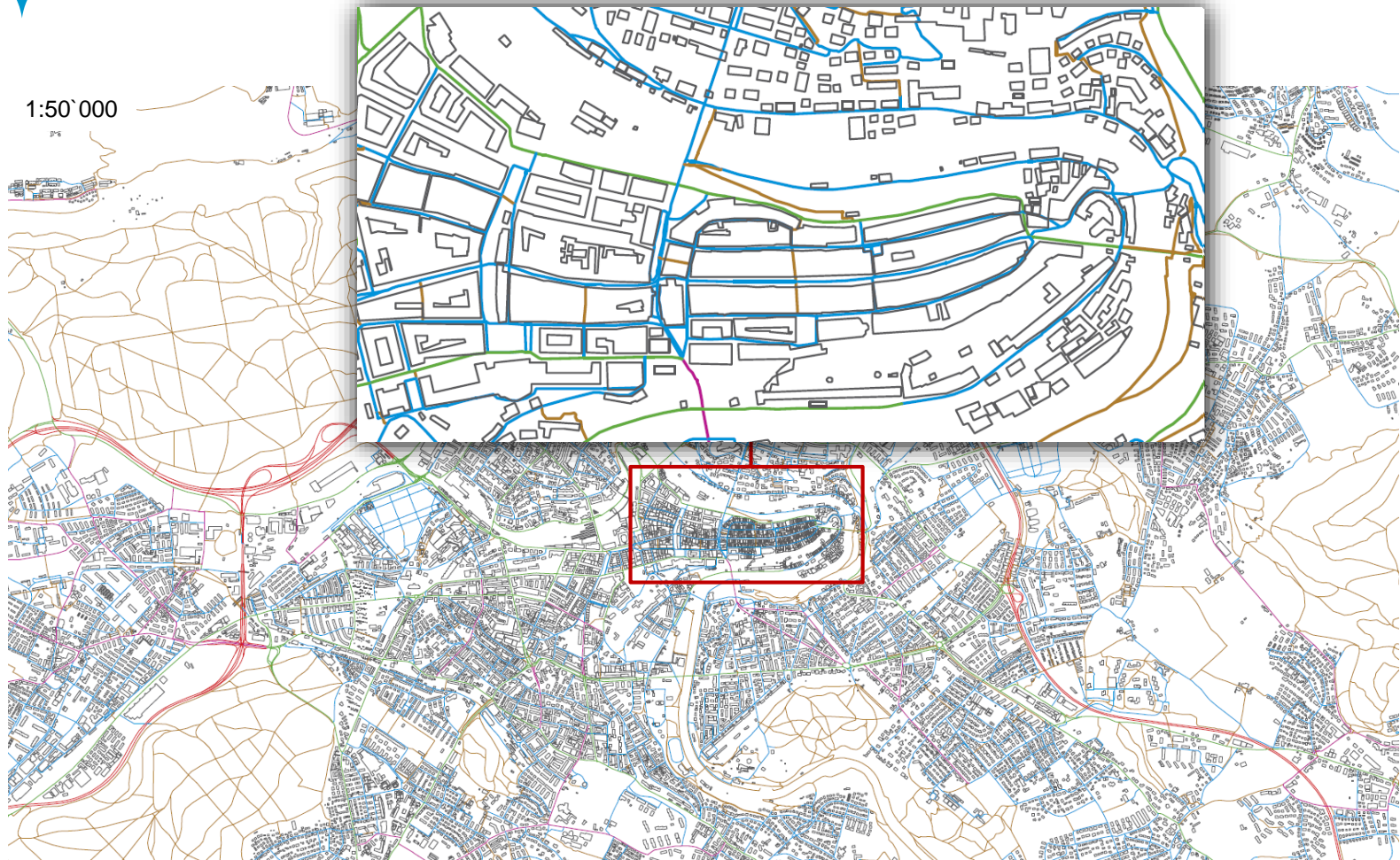
1

Model Generalisation: Buildings



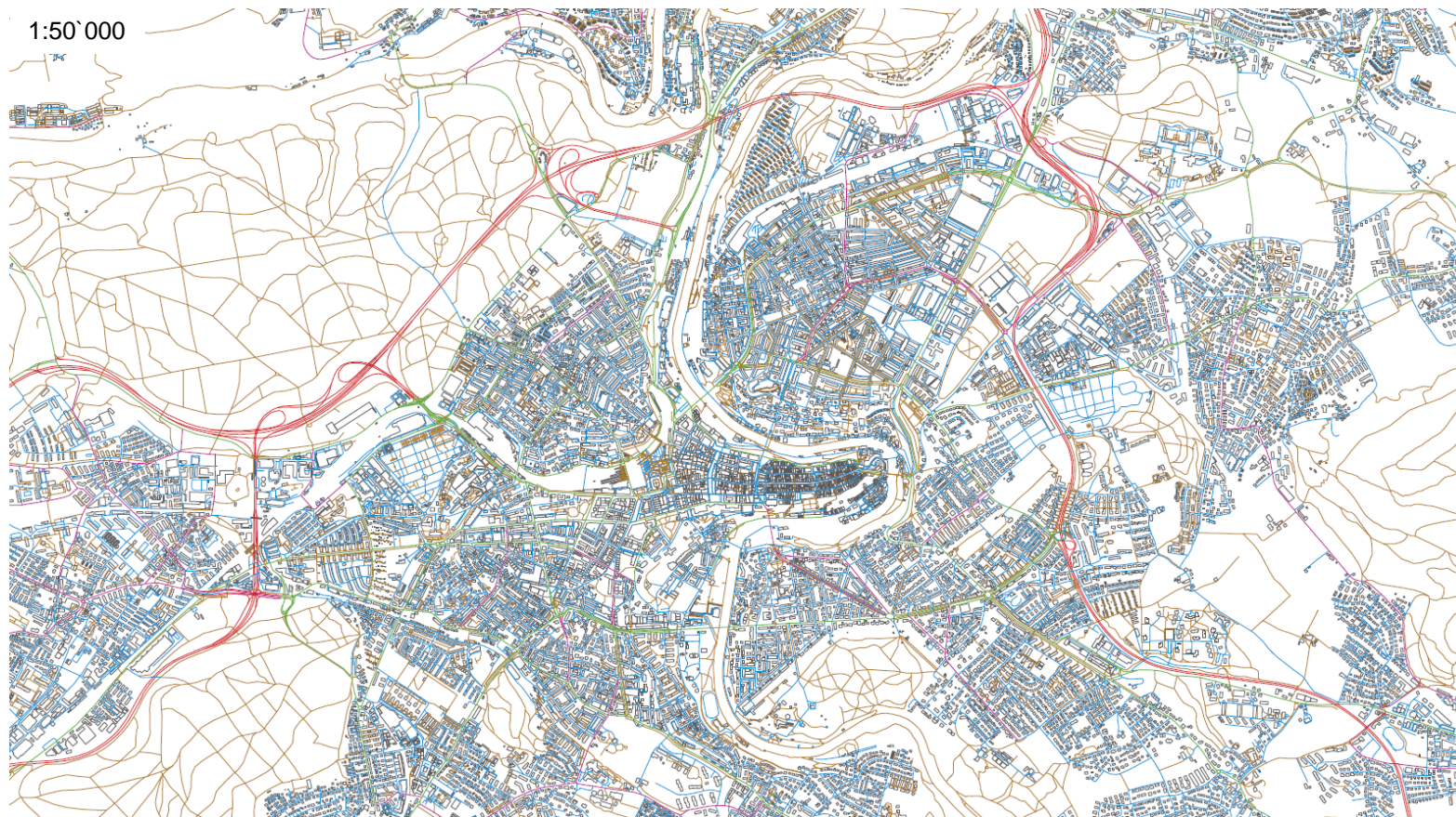
1

Model Generalisation: Buildings



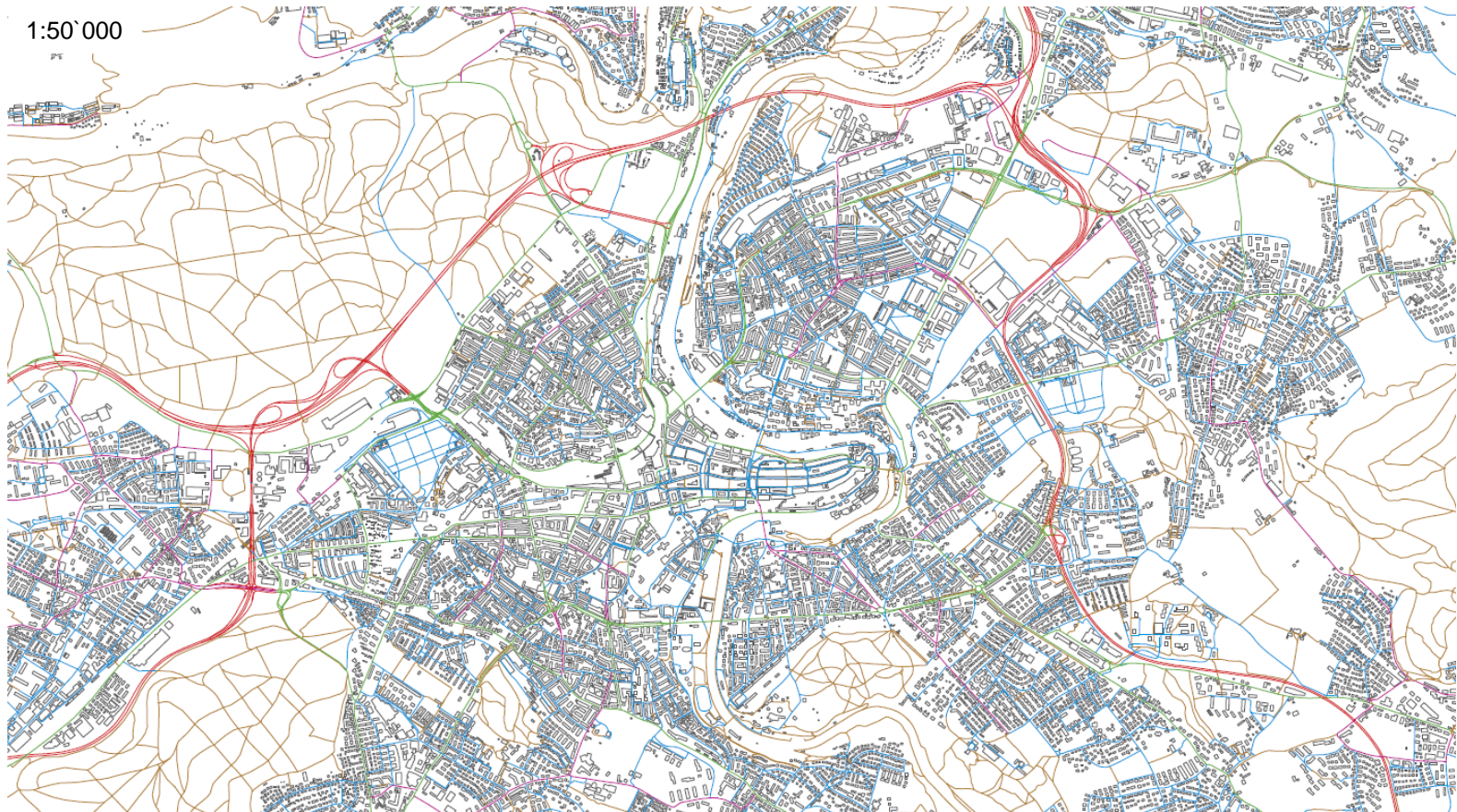
1

Model Generalisation: Roads and Buildings



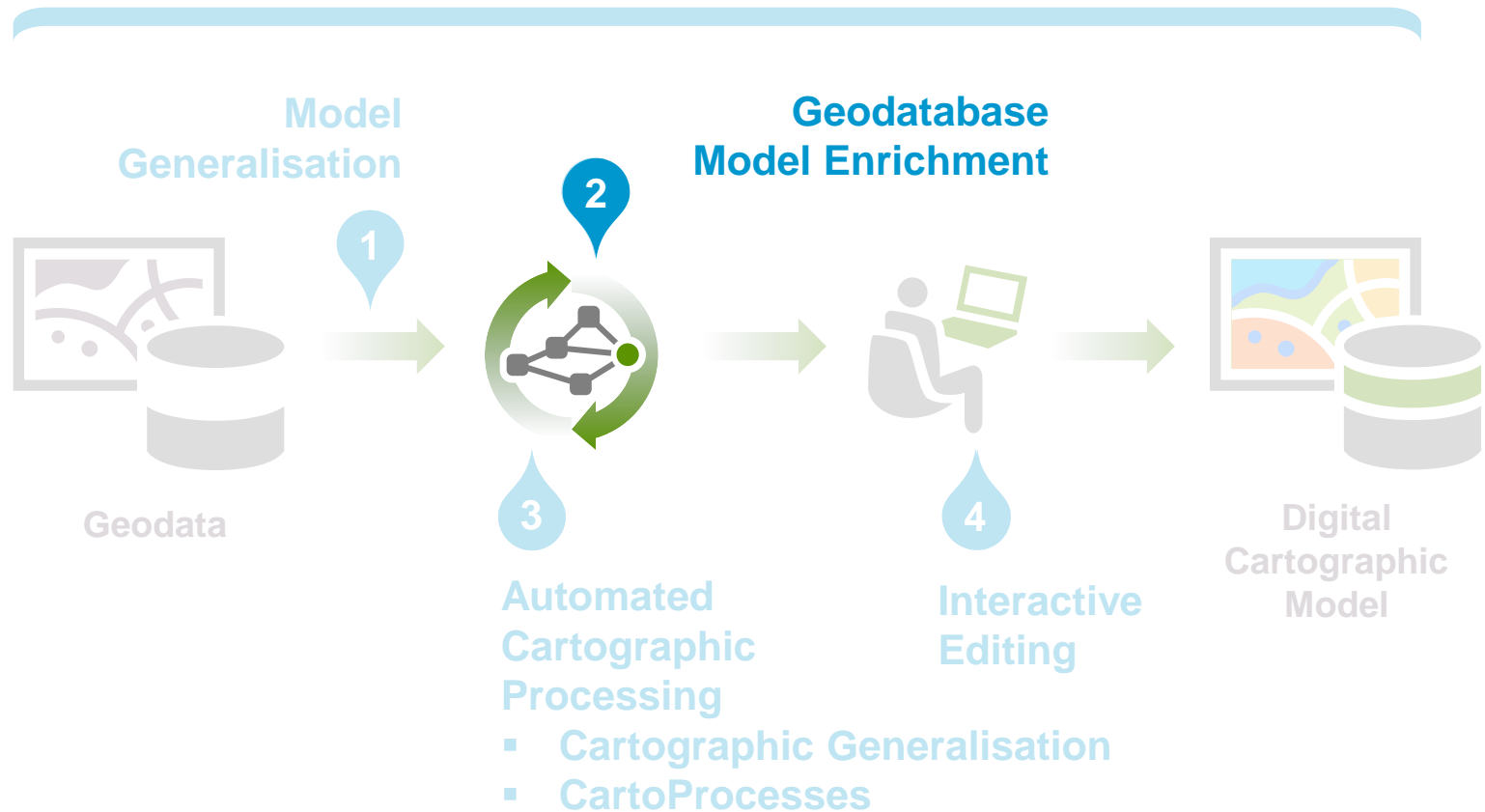
1

Model Generalisation: Roads and Buildings



2 Geodatabase and Model Enrichment

Quality Control



2

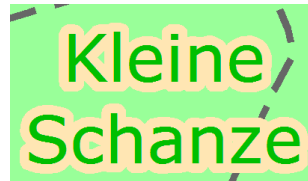
Geodatabase and Model Enrichment

+ What's needed for Cartography and Cartographic Generalisation?

> Additional features?

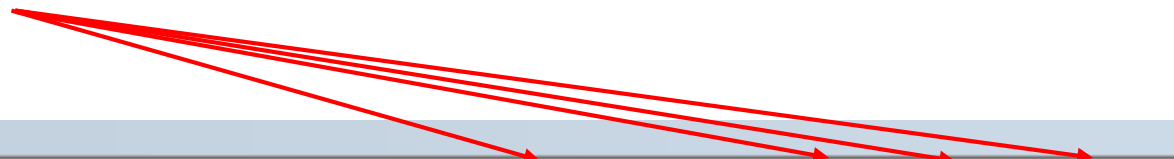
> Markers    

> Masks



>

> Additional attributes?



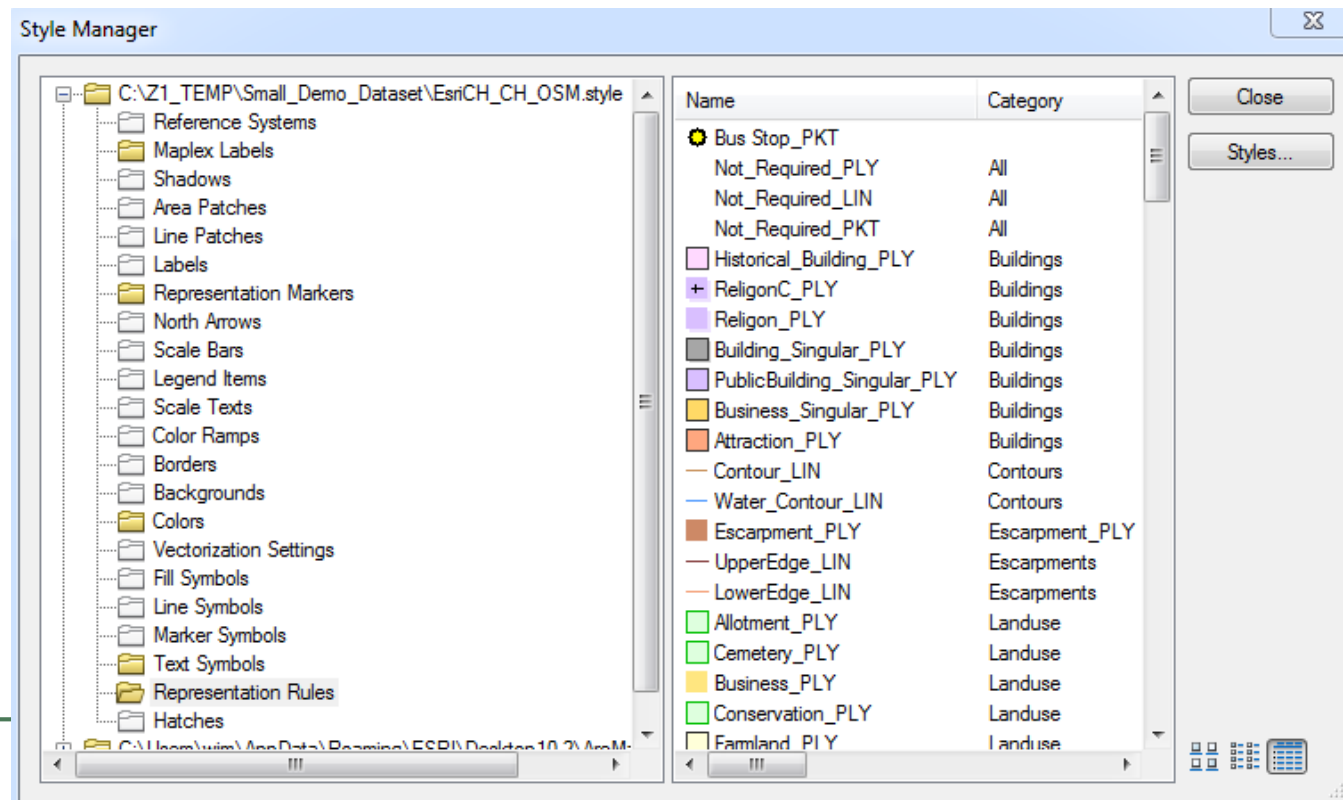
Buildings										
OBJECTID *	Shape *	osm_id	name	type	Shape_Length	Shape_Area	RuleID_1	Override_1	Visibility	Angle

2

Geodatabase and Model Enrichment

+ Define a Symbol catalogue

- > Style File
- > Representation Rules
- > Maplex Label properties



2

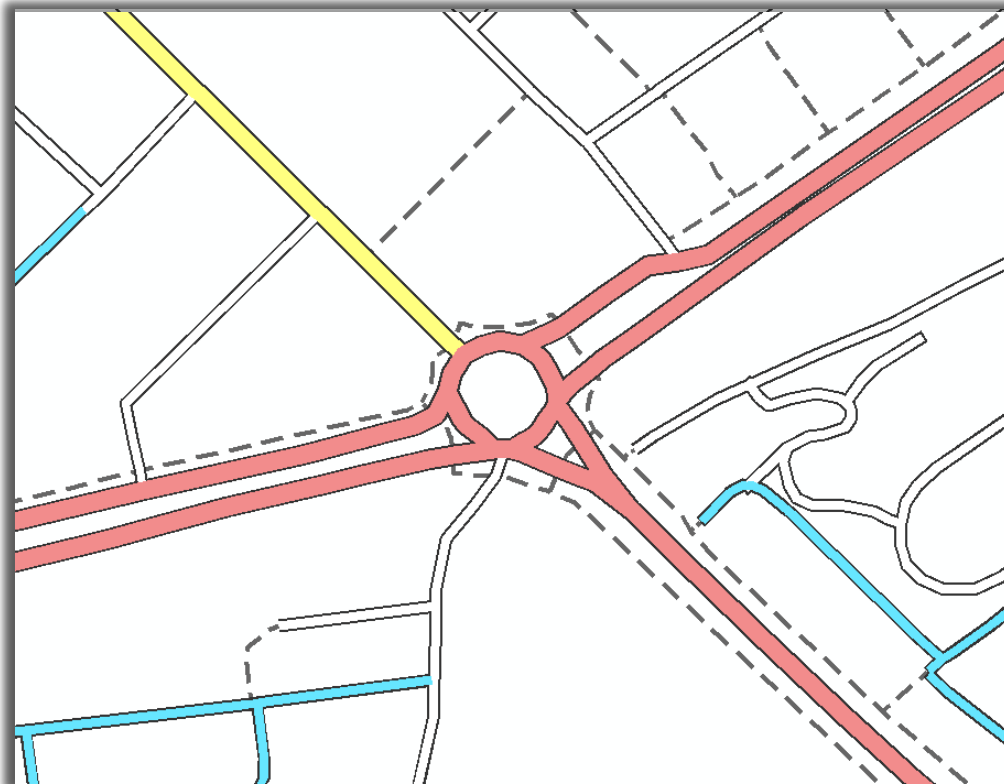
Geodatabase and Model Enrichment

- + **Assign the symbol catalogue to the Geodata**
 - > Mapping based on attribute value combinations



2 Geodatabase and Model Enrichment

- + **Assign the symbol catalogue to the Geodata**
 - > Mapping based on attribute value combinations



2

Geodatabase and Model Enrichment

Roads [OSM_CH]

Dataset: Roads [OSM_CH]

Attributes Mappings

Available Attributes:

	Name	Field Type
	OBJECTID	Object ID
	Shape	Geometry
1.23	osm_id	Double
Abc	name	Text
Abc	ref	Text
123	oneway	Short Integer
123	bridge	Short Integer
123	maxspeed	Short Integer
1.23	Shape_Length	Double
010 1.01	Override_1	Blob
123	Linecap	Long Integer
123	Extremity	Long Integer
1.23	CutBegin	Double
1.23	CutEnd	Double

Source Attributes:

	Name
Abc	type
123	tunnel

Target Attributes:

	Name
123	RuleID_1
123	Visibility

Roads [OSM_CH]

Dataset: Roads [OSM_CH]

Attributes Mappings

(Right-click column headers for field type and coded values)

Import Mappings...

Export Mappings...

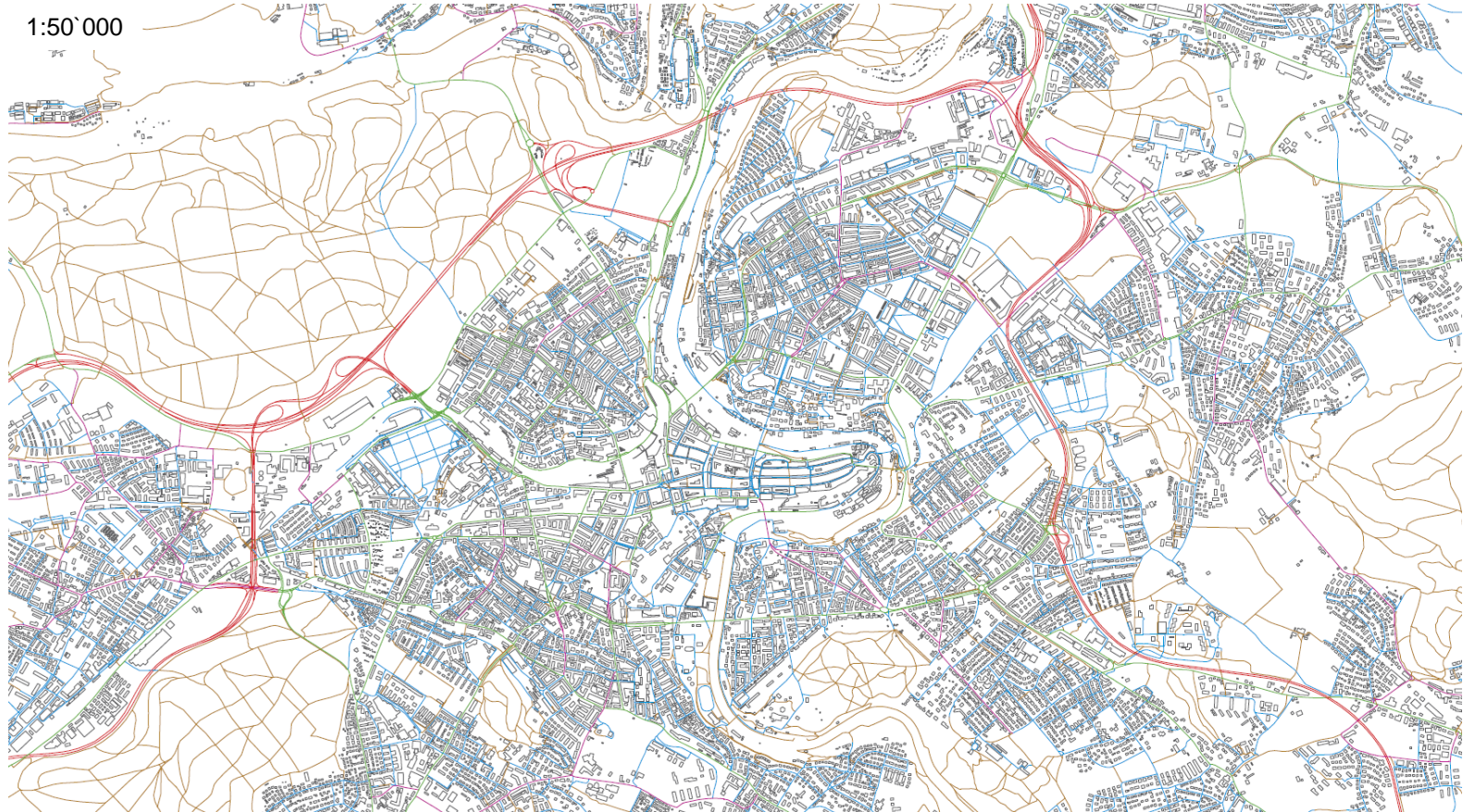
Find:

0 of 0 Next Previous Match Case Filter Rows

	type	tunnel	RuleID_1	Visibility	Description
	access	NULL	14	1	Residential_LIN
	access	0	14	1	Residential_LIN
	access	1	15	1	Residential_T_LIN
	bridleway	*	24	1	Track_LIN
	byway	*	24	1	Track_LIN
	cycleway	*	1	1	Cycleway_LIN
	footway	*	8	1	Path_LIN
	footway; track	*	24	1	Track_LIN
	living_street	*	3	1	Living_street_LIN
	minor_road	NULL	14	1	Residential_LIN
	minor_road	0	14	1	Residential_LIN
	minor_road	1	15	1	Residential_T_LIN

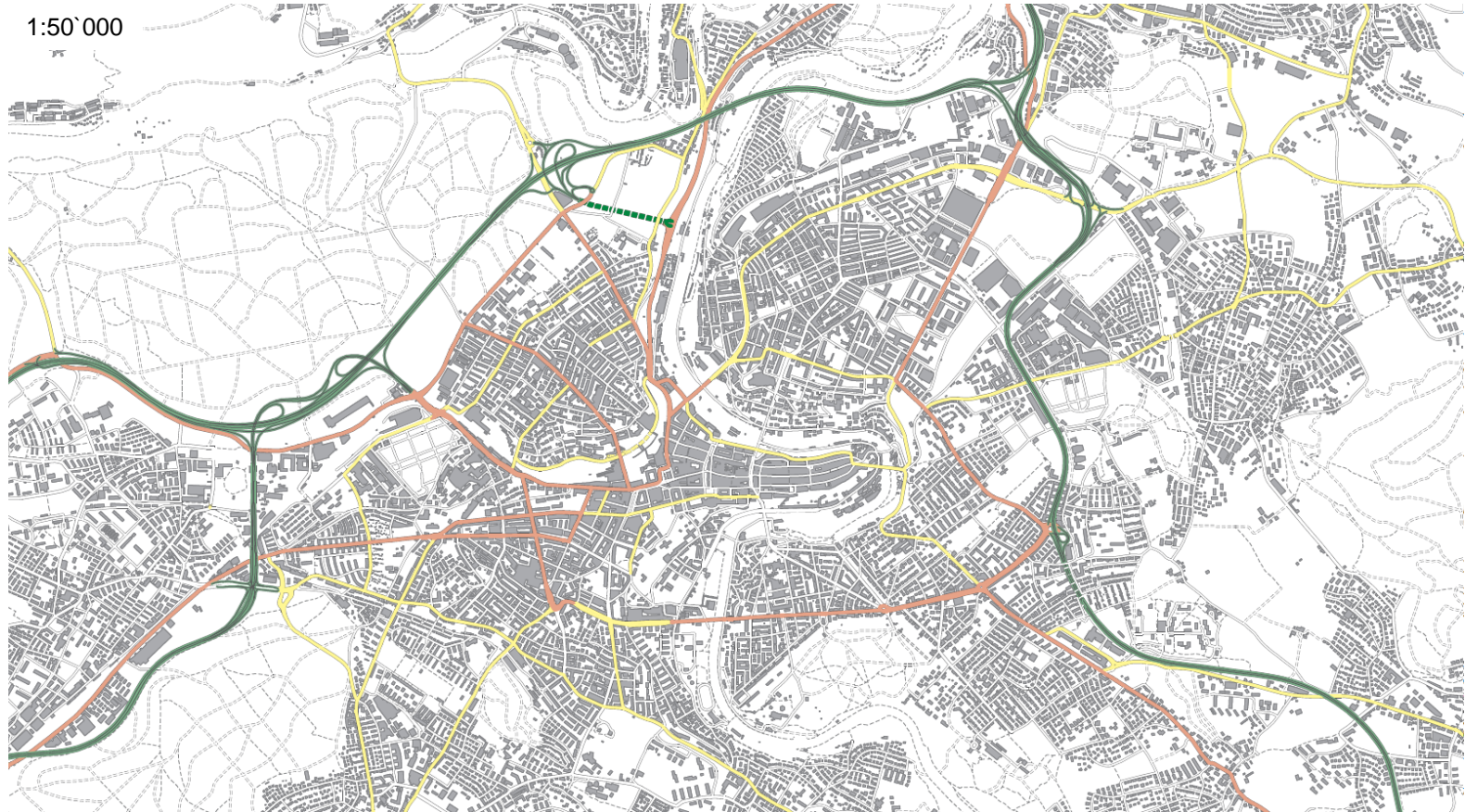
2

Geodatabase and Model Enrichment



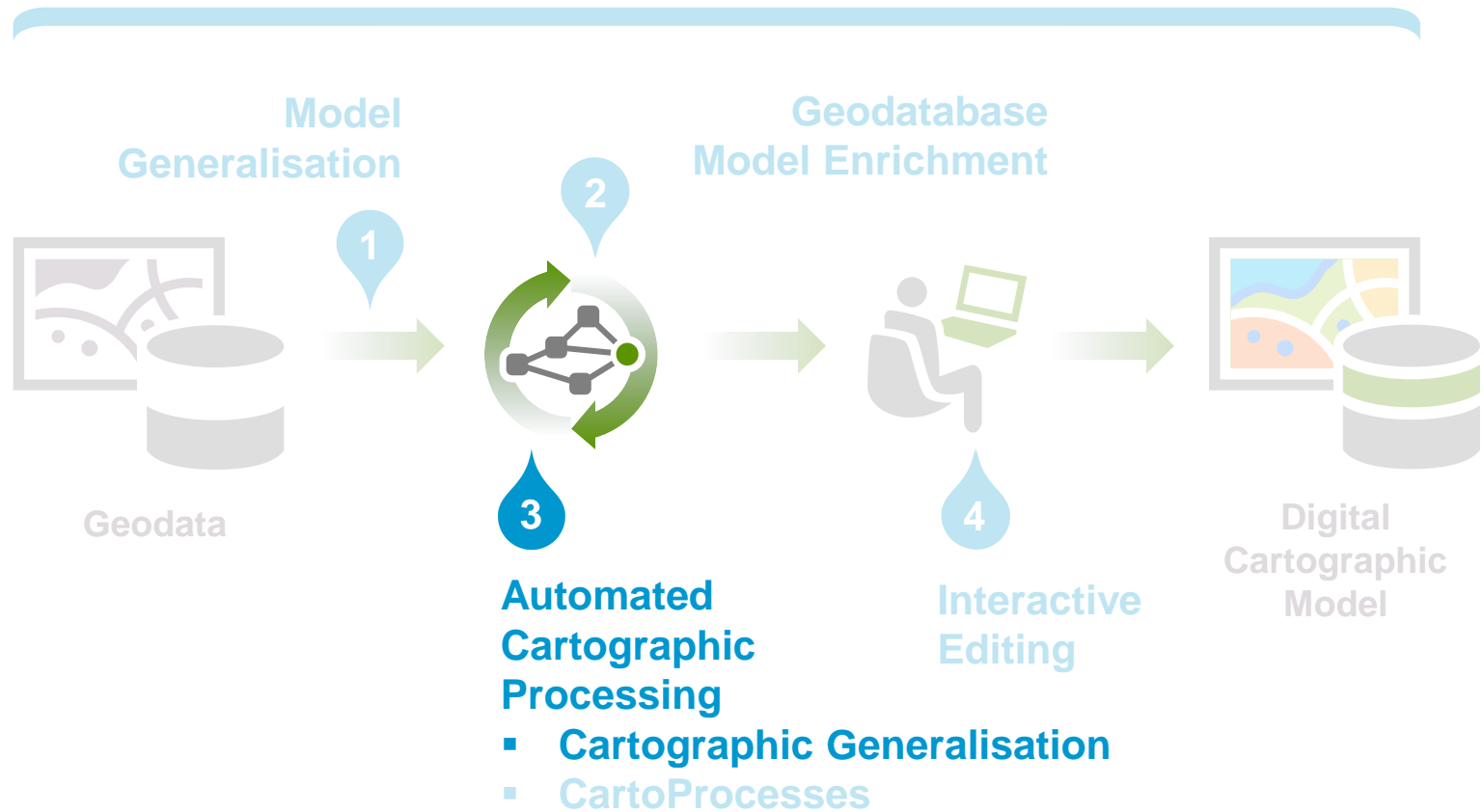
2

Geodatabase and Model Enrichment



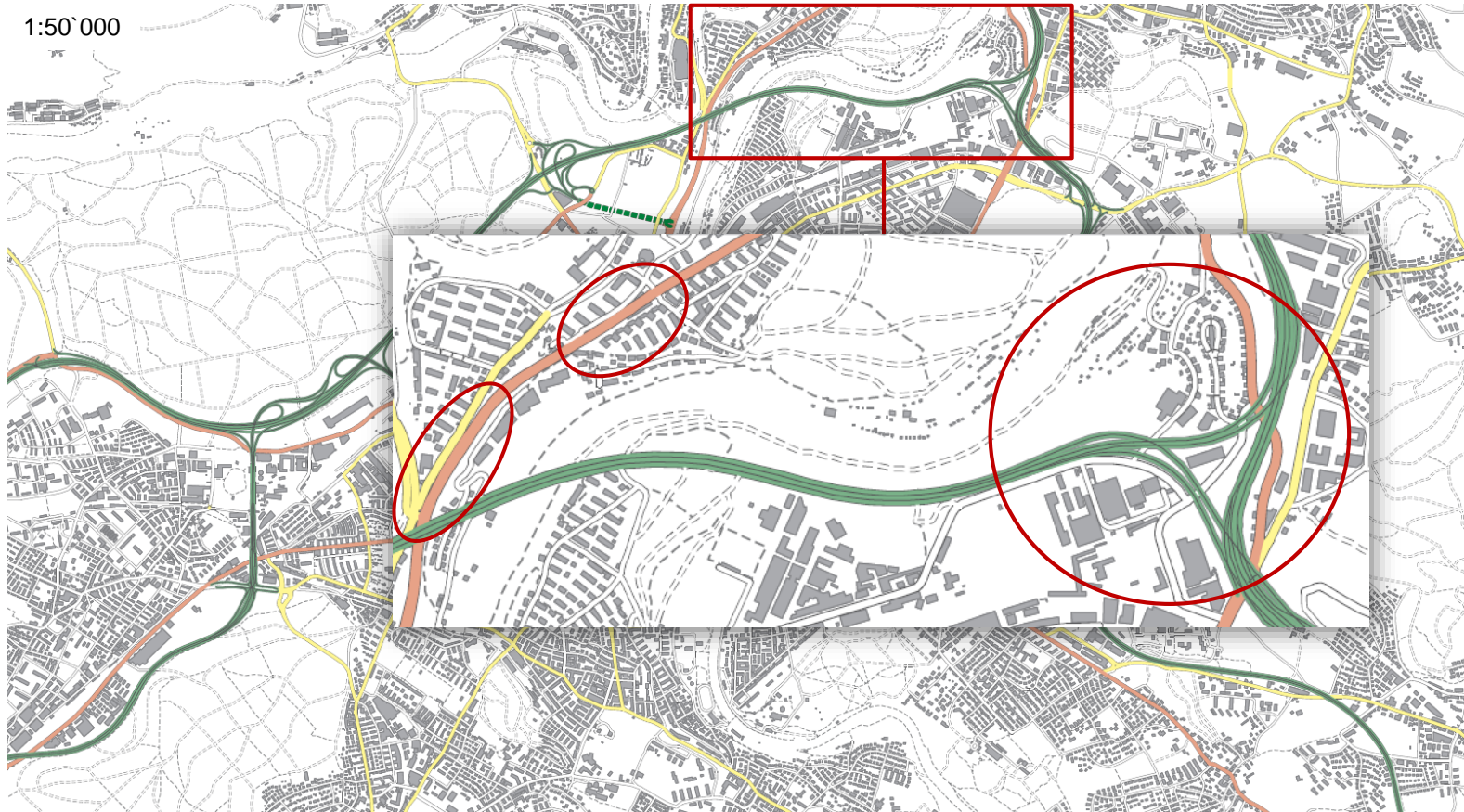
3 Cartographic Generalisation

Quality Control



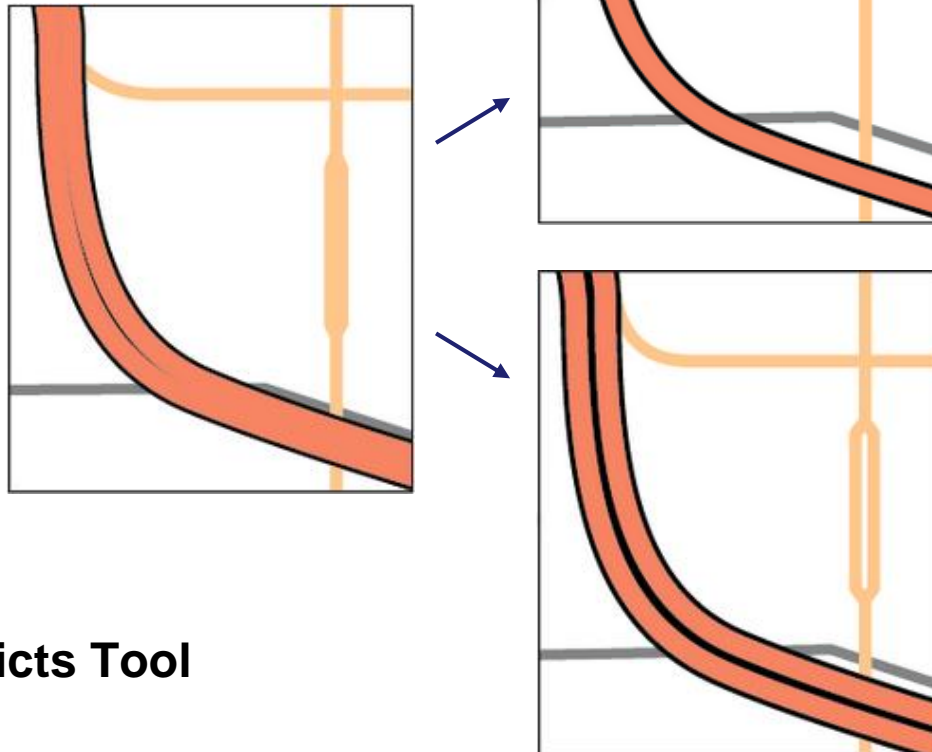
3

Cartographic Generalisation



3 Cartographic Generalisation: Roads

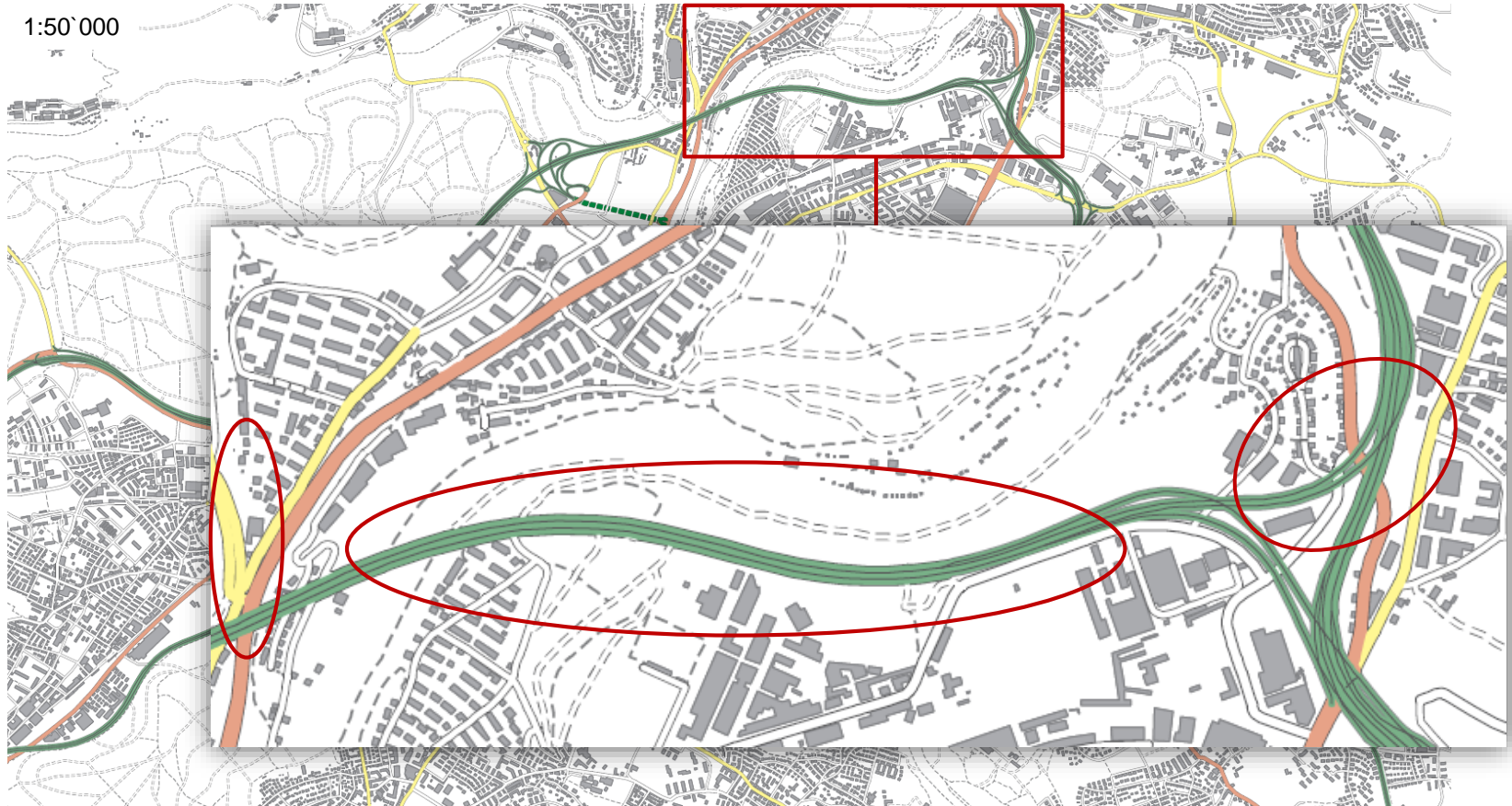
+ Merge Divided Roads Tool



+ Resolve Road Conflicts Tool

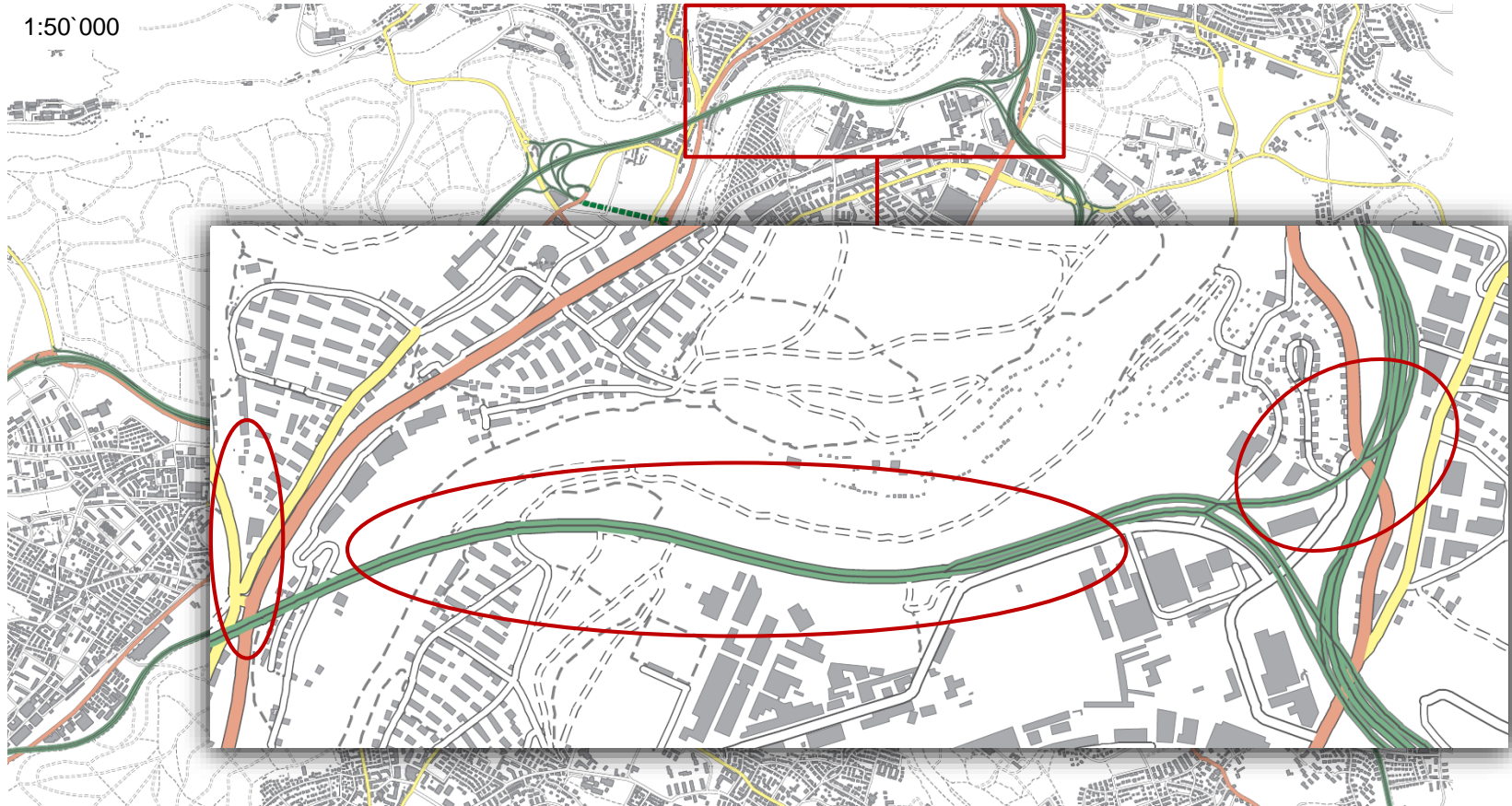
3

Cartographic Generalisation: Roads



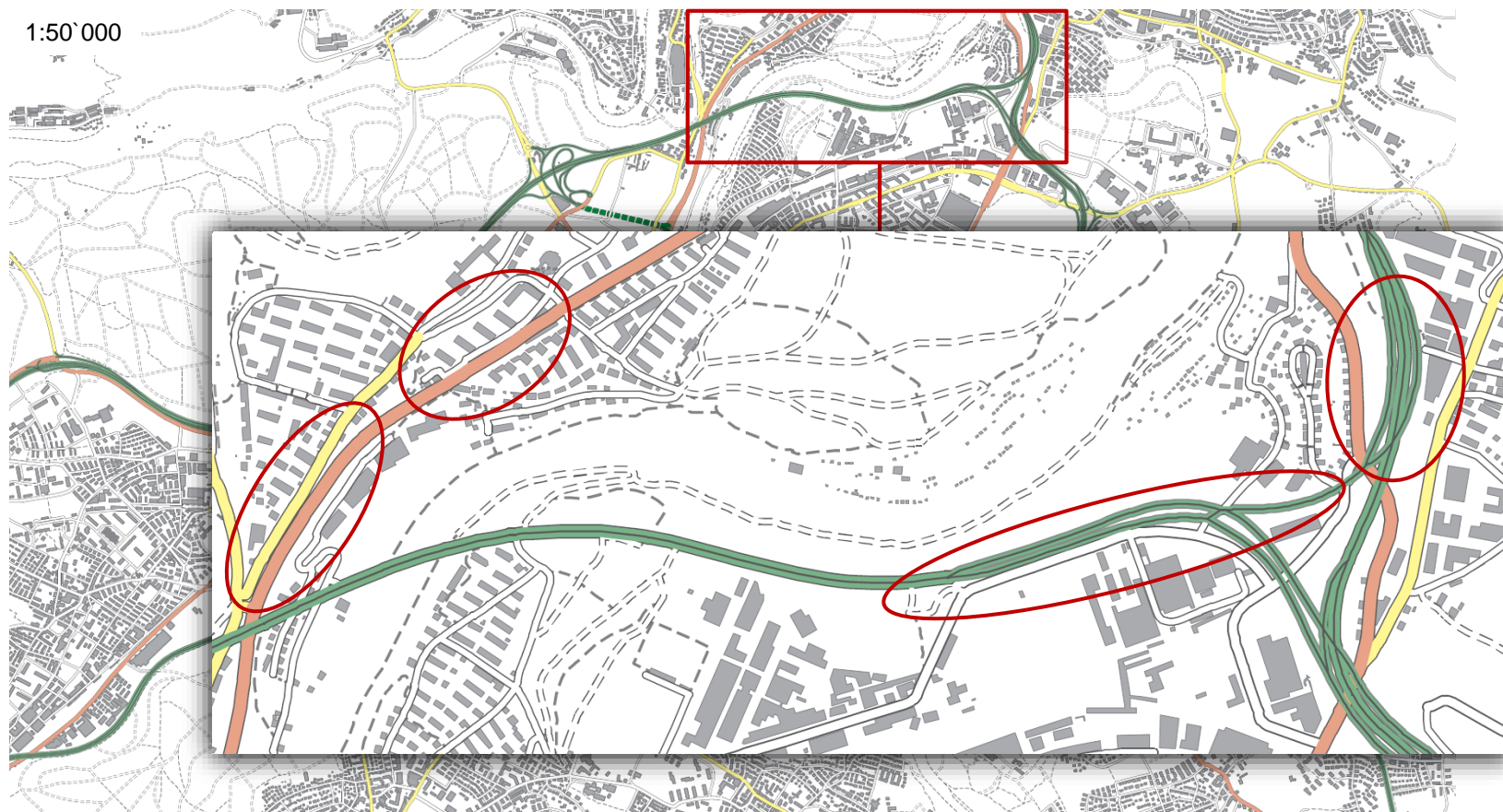
3

Cartographic Generalisation: Roads



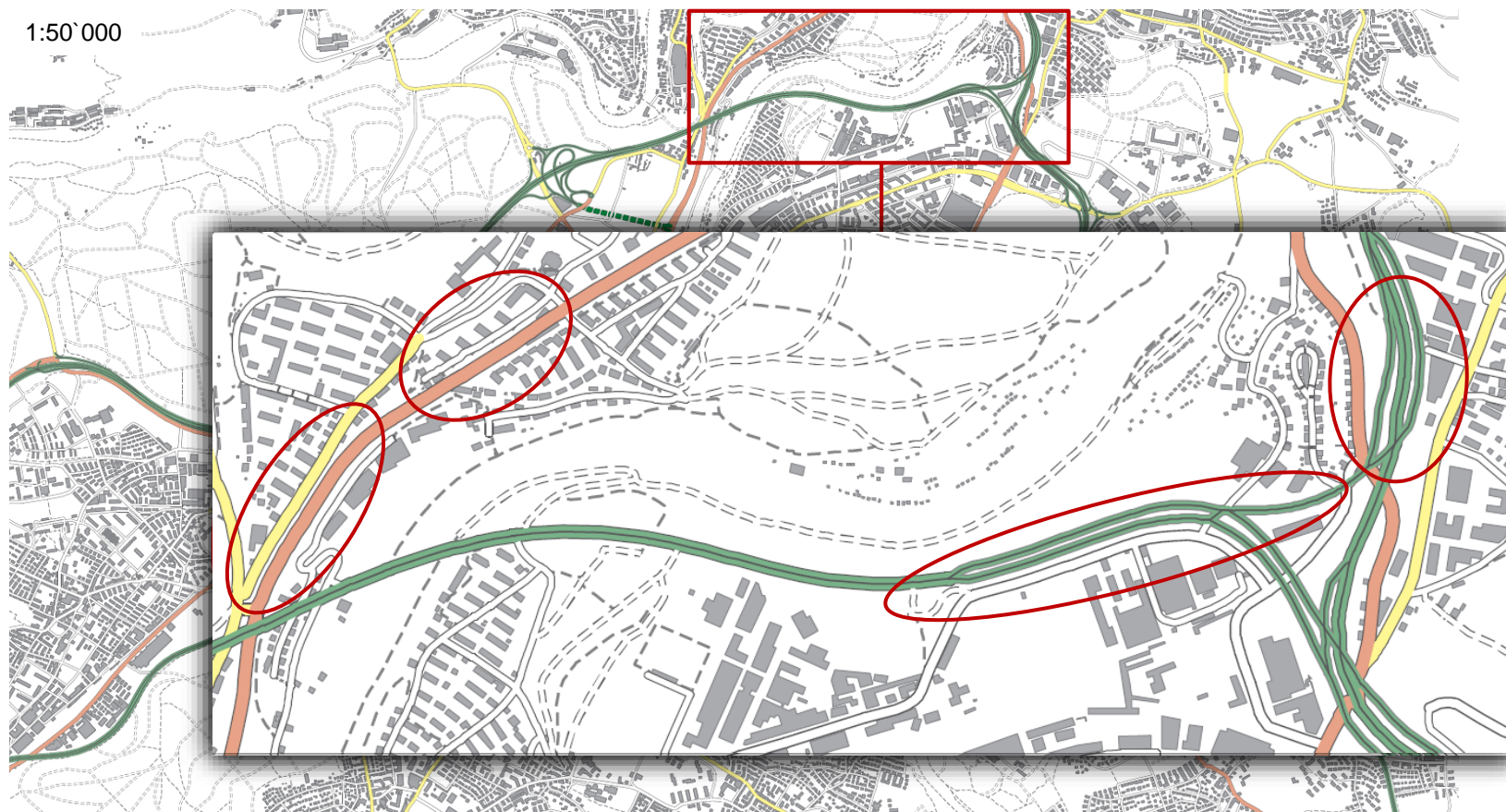
3

Cartographic Generalisation: Roads



3

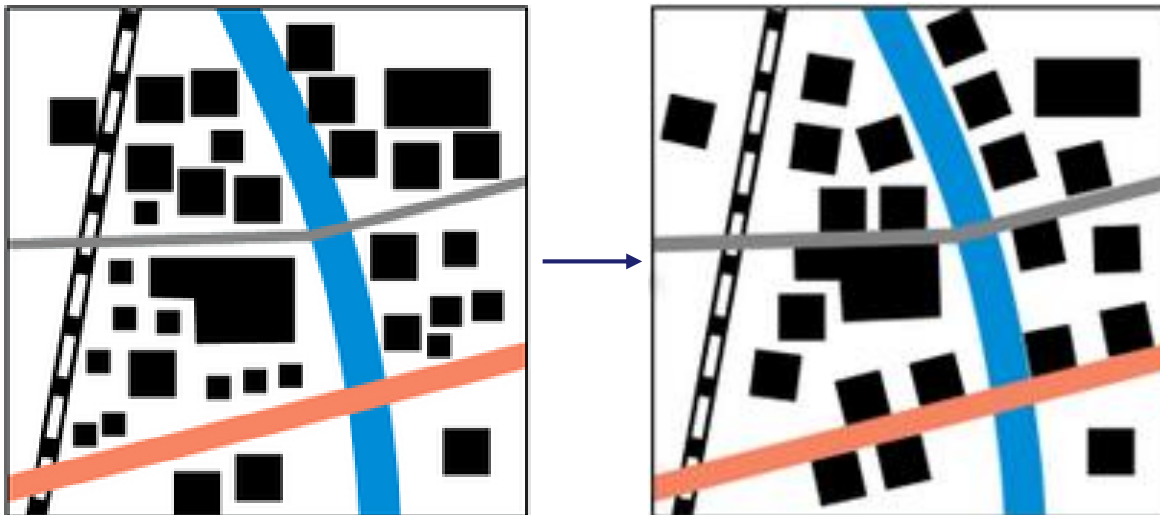
Cartographic Generalisation: Roads



3 Cartographic Generalisation: Buildings

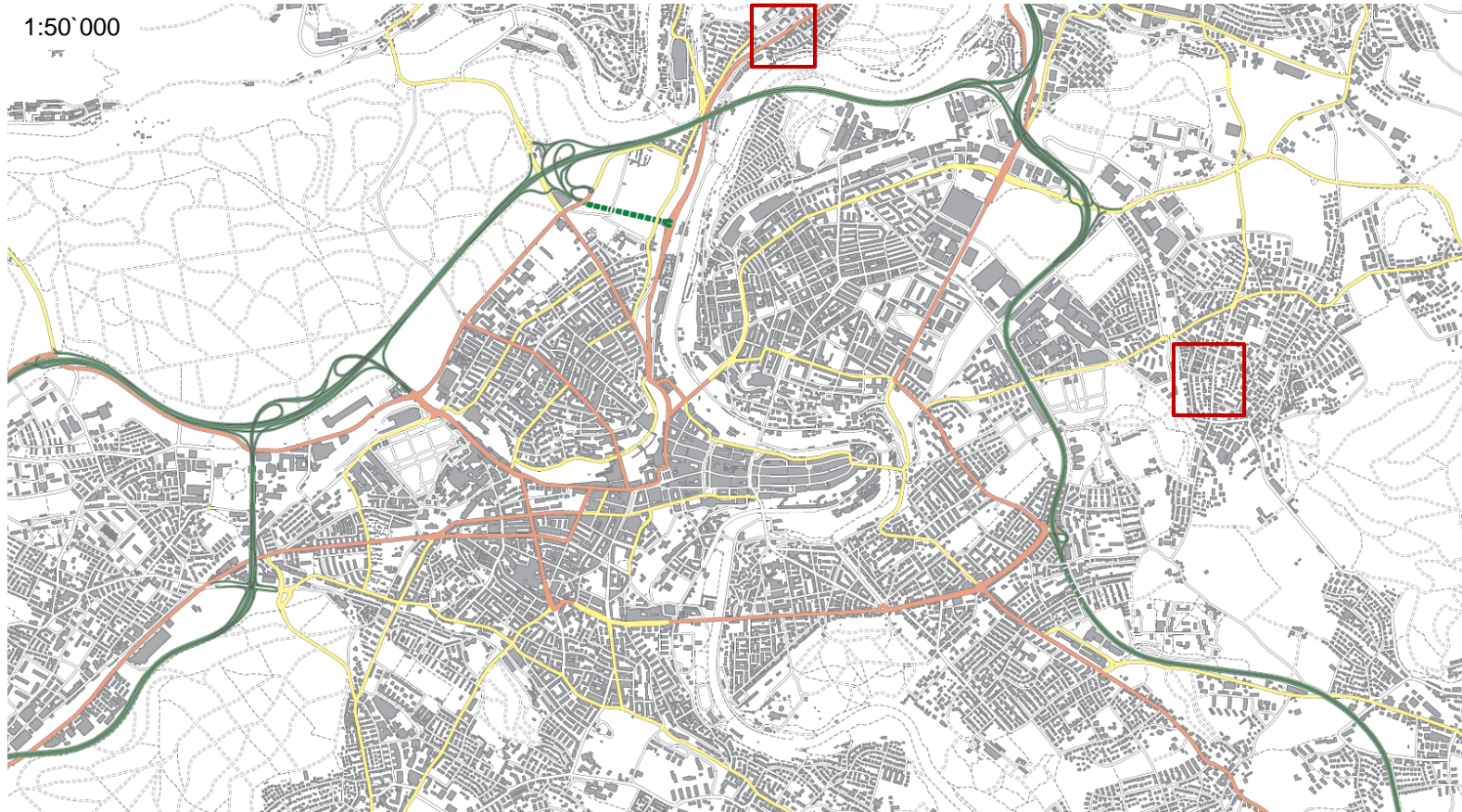
+ Propagate Displacement Tool

+ Resolve Building Conflict Tool



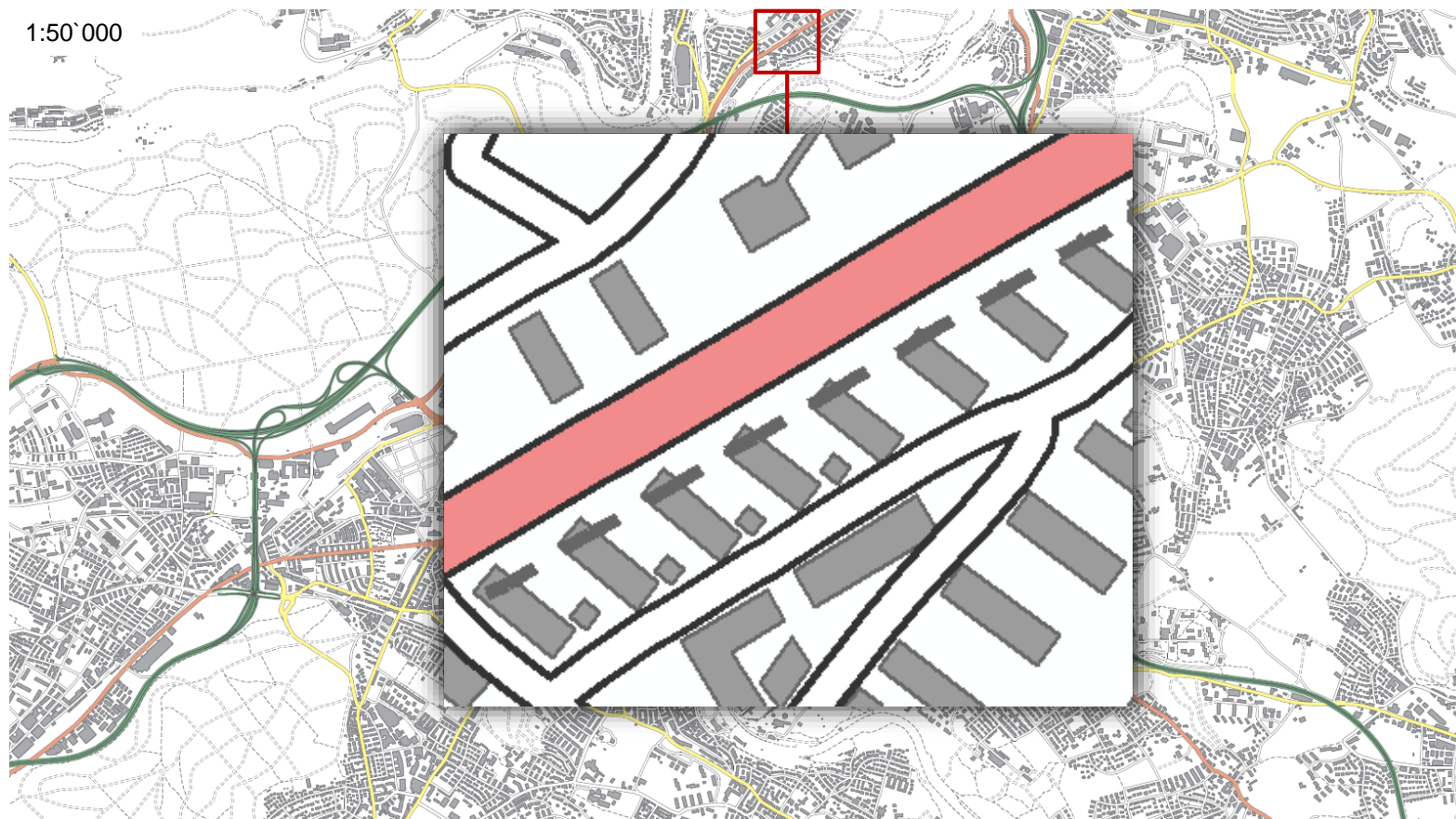
3

Cartographic Generalisation: Buildings



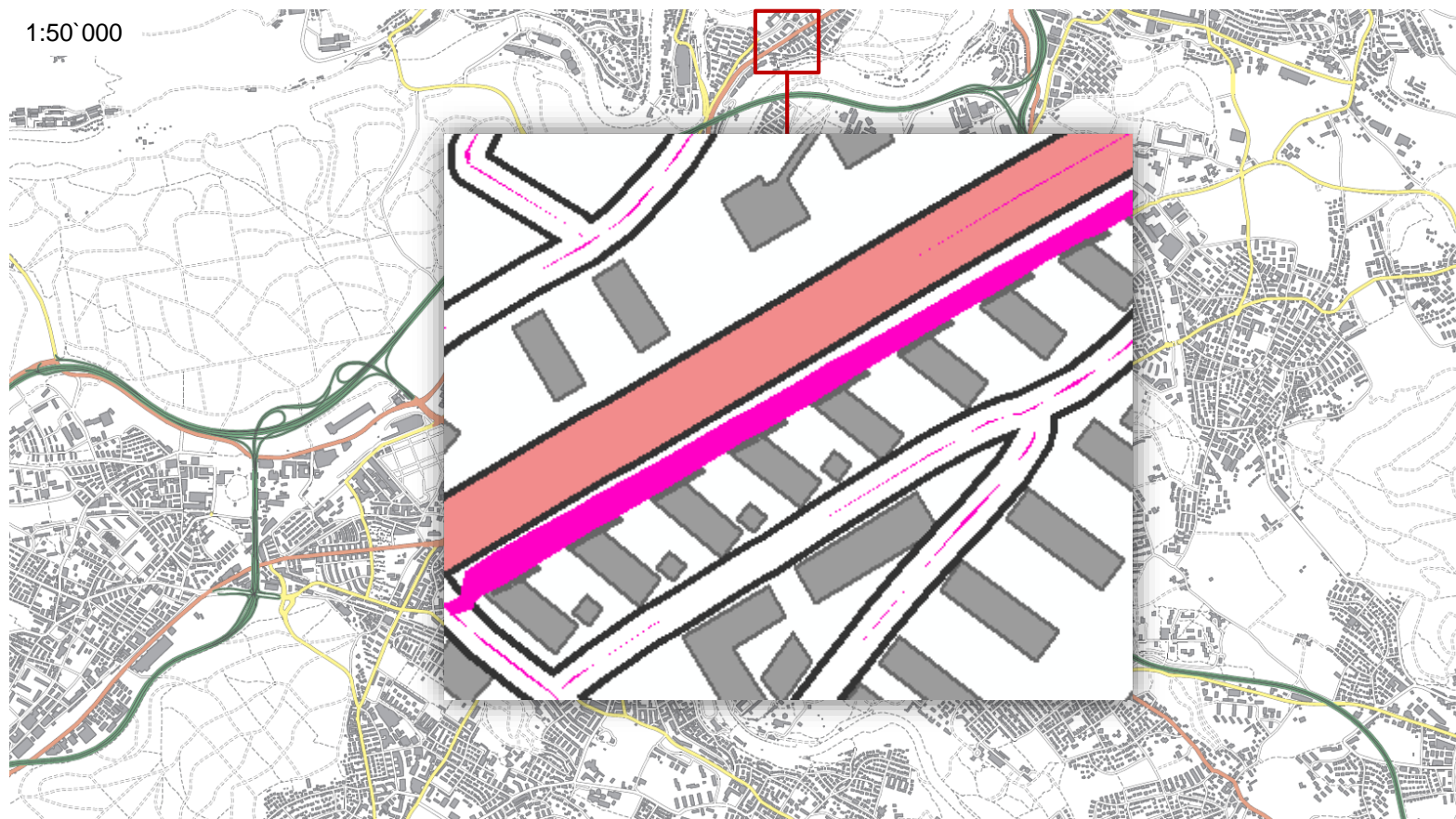
3

Cartographic Generalisation: Buildings



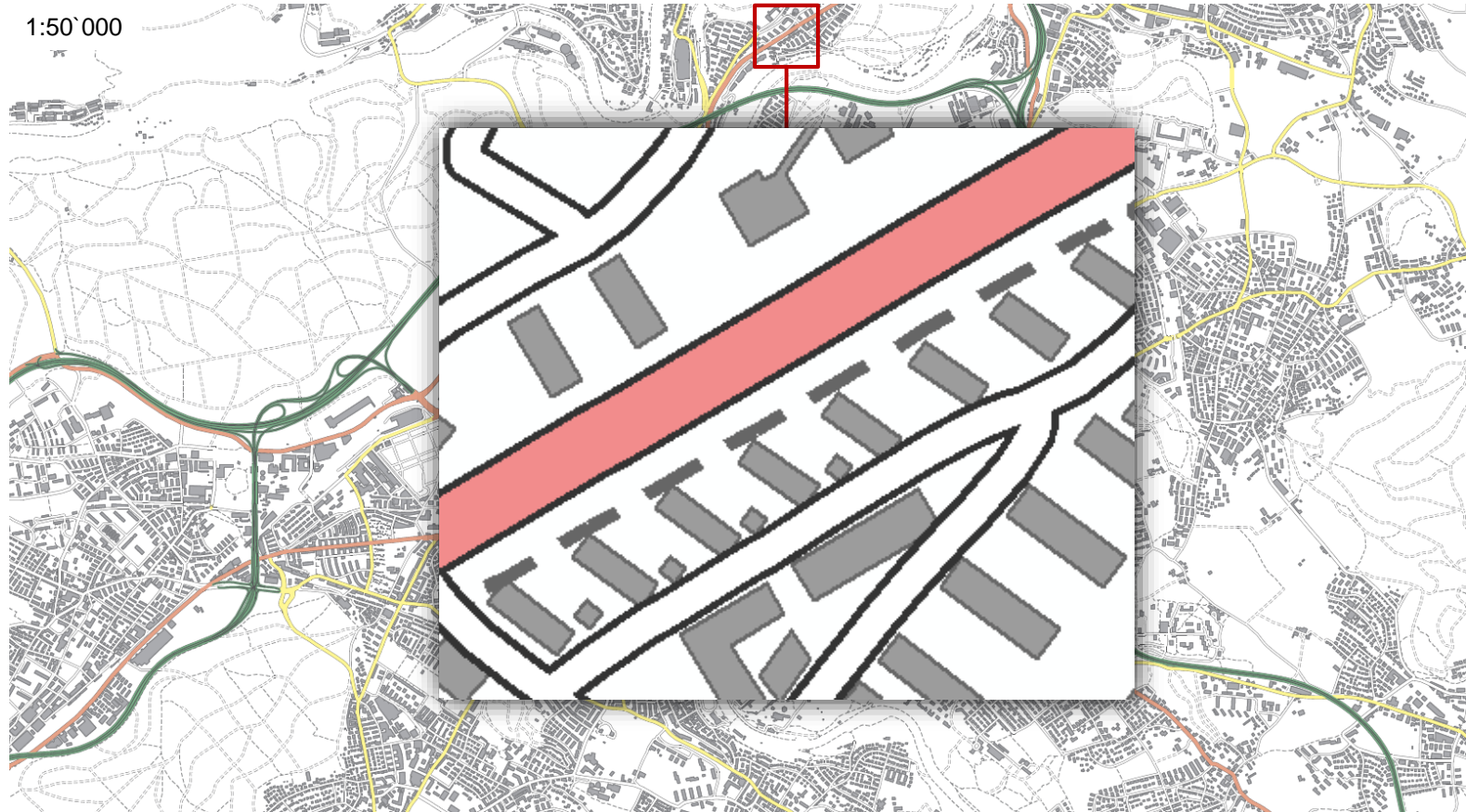
3

Cartographic Generalisation: Buildings



3

Cartographic Generalisation: Buildings



3

Cartographic Generalisation: Buildings



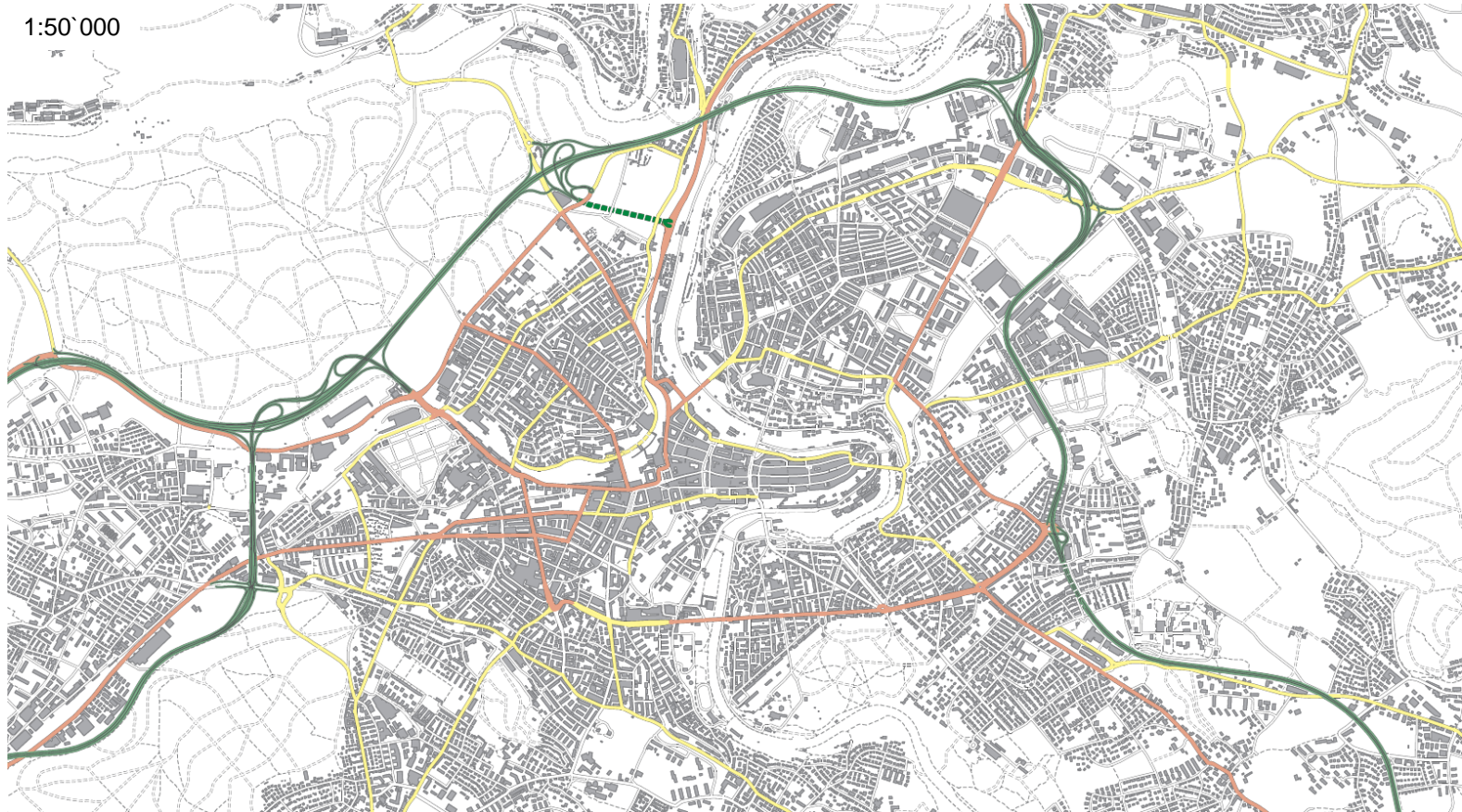
3

Cartographic Generalisation: Buildings



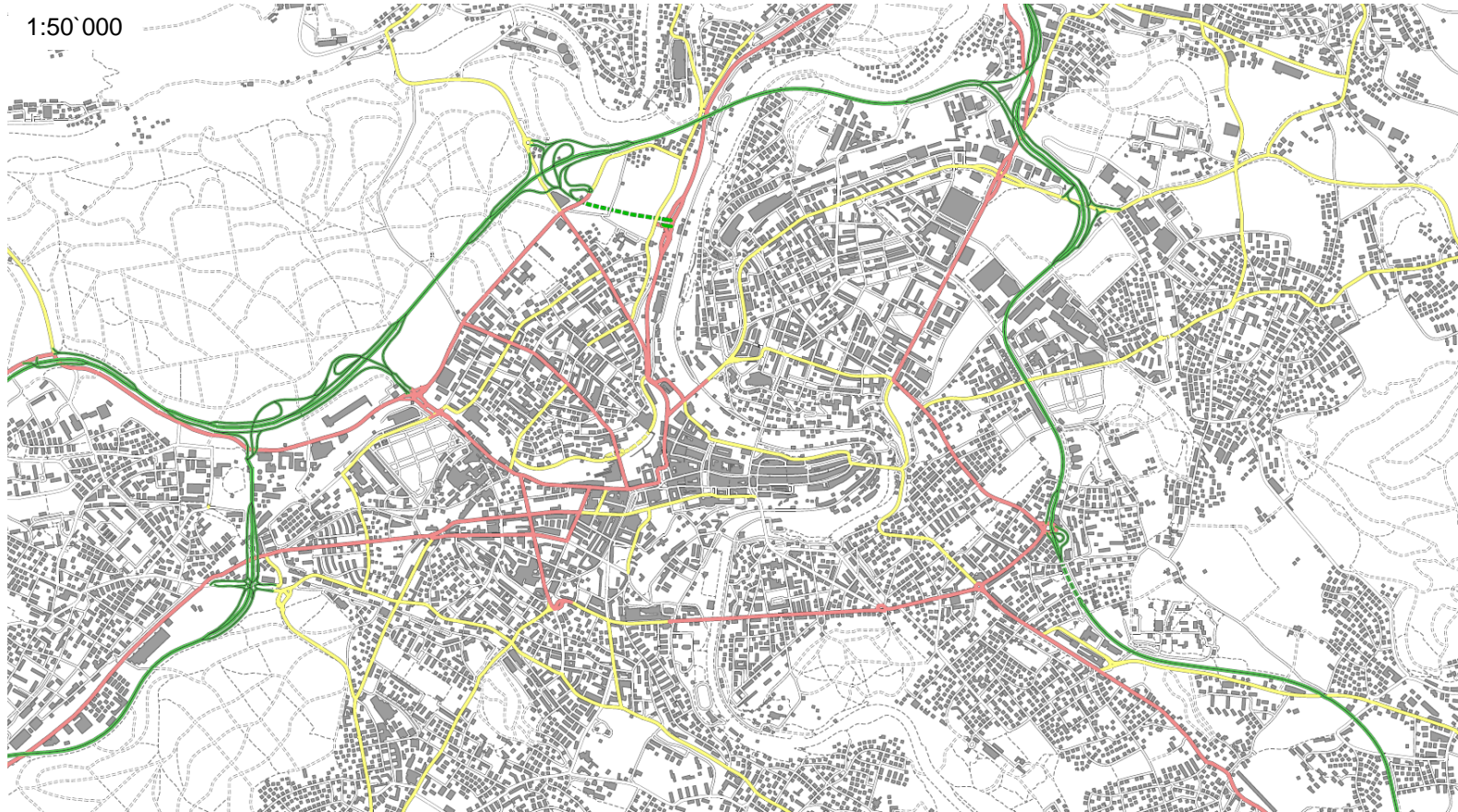
3

Cartographic Generalisation: Roads and Buildings



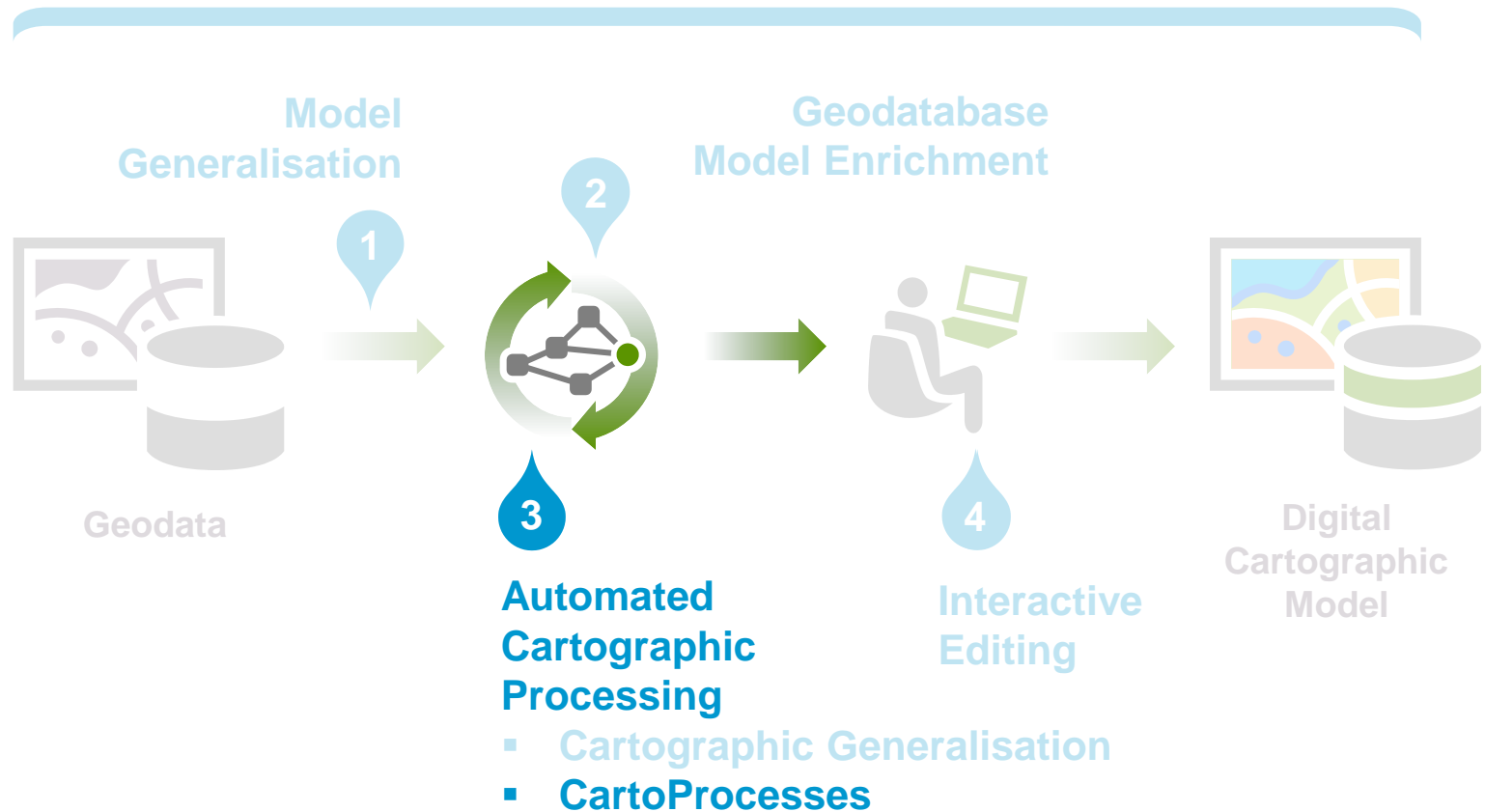
3

Cartographic Generalisation: Roads and Buildings



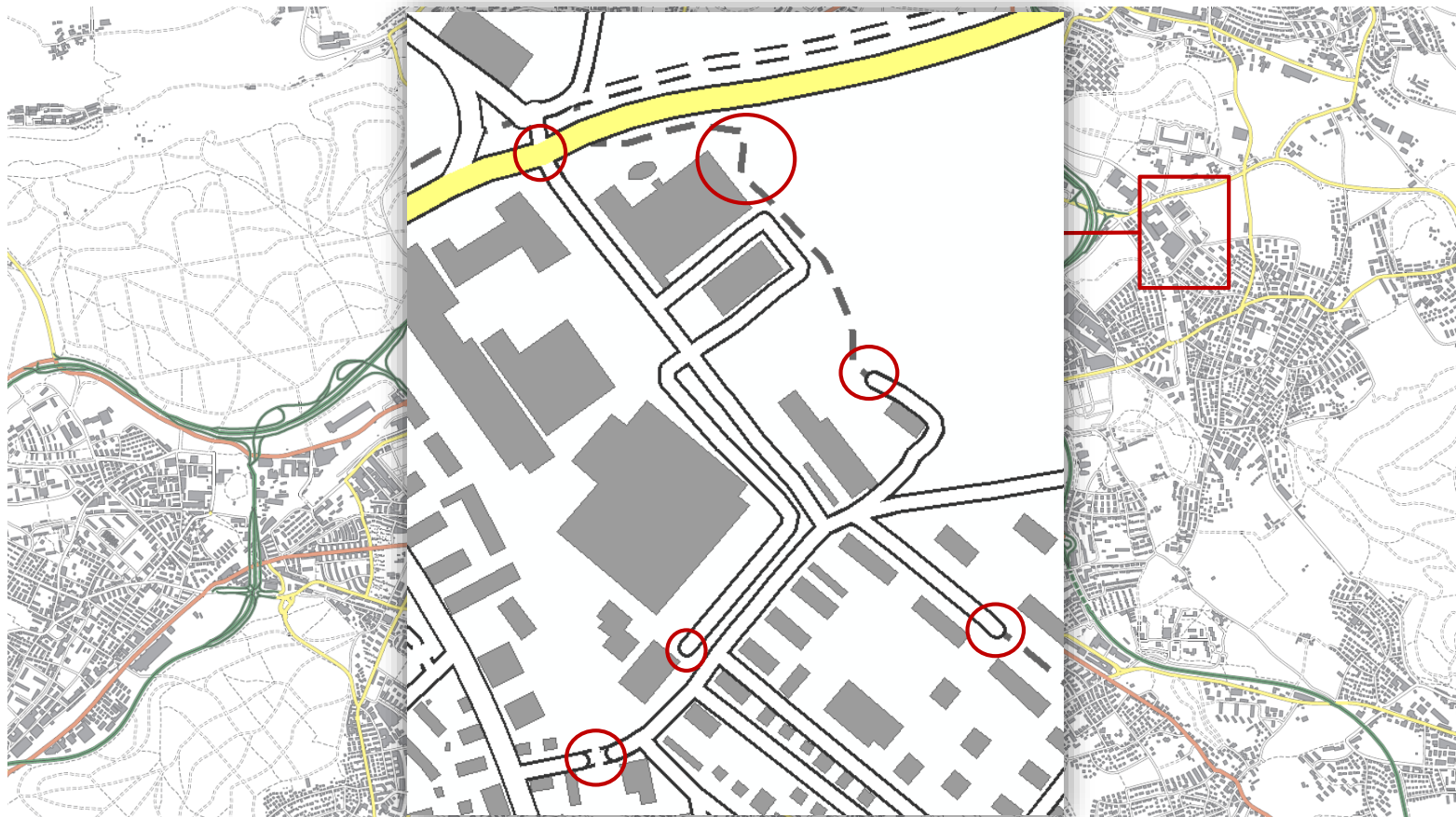
3 Automated Processing: CartoProcesses

Quality Control



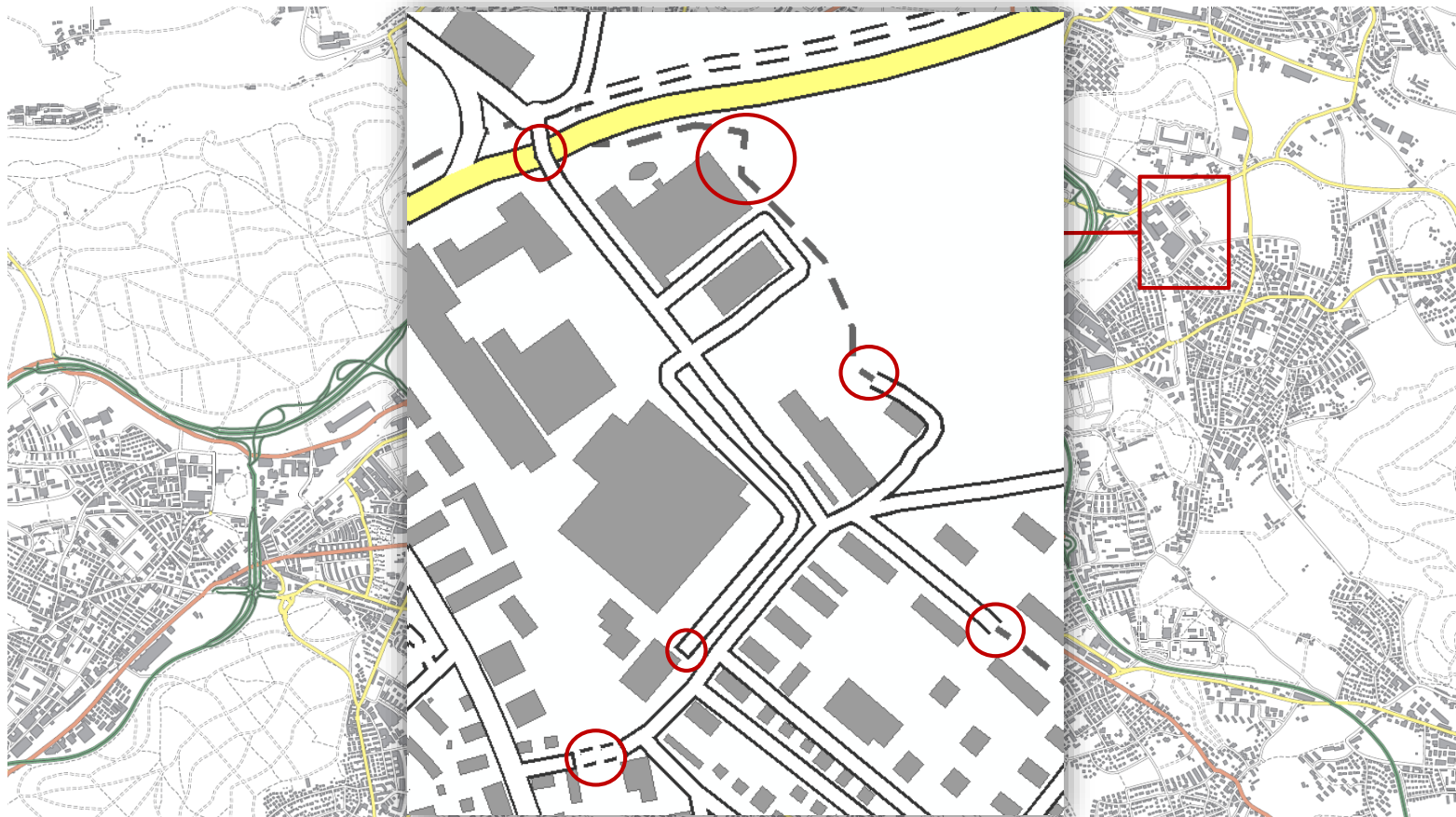
3 Automated Processing: CartoProcesses

+ Over 20 Processes for a better cartographic finish



3 Automated Processing: CartoProcesses

+ Over 20 Processes for a better cartographic finish



3

Automated Processing: CartoProcesses

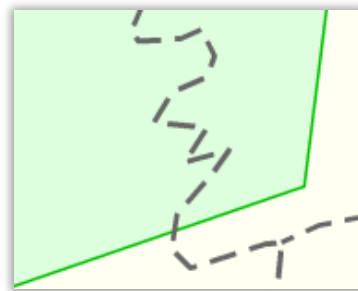
+ Over 20 Processes for a better cartographic finish



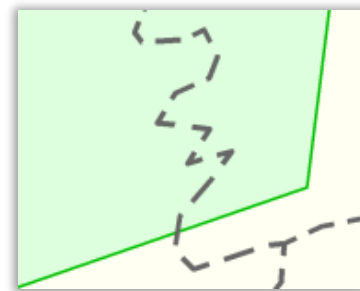
Before



After



Before



After



Before



After



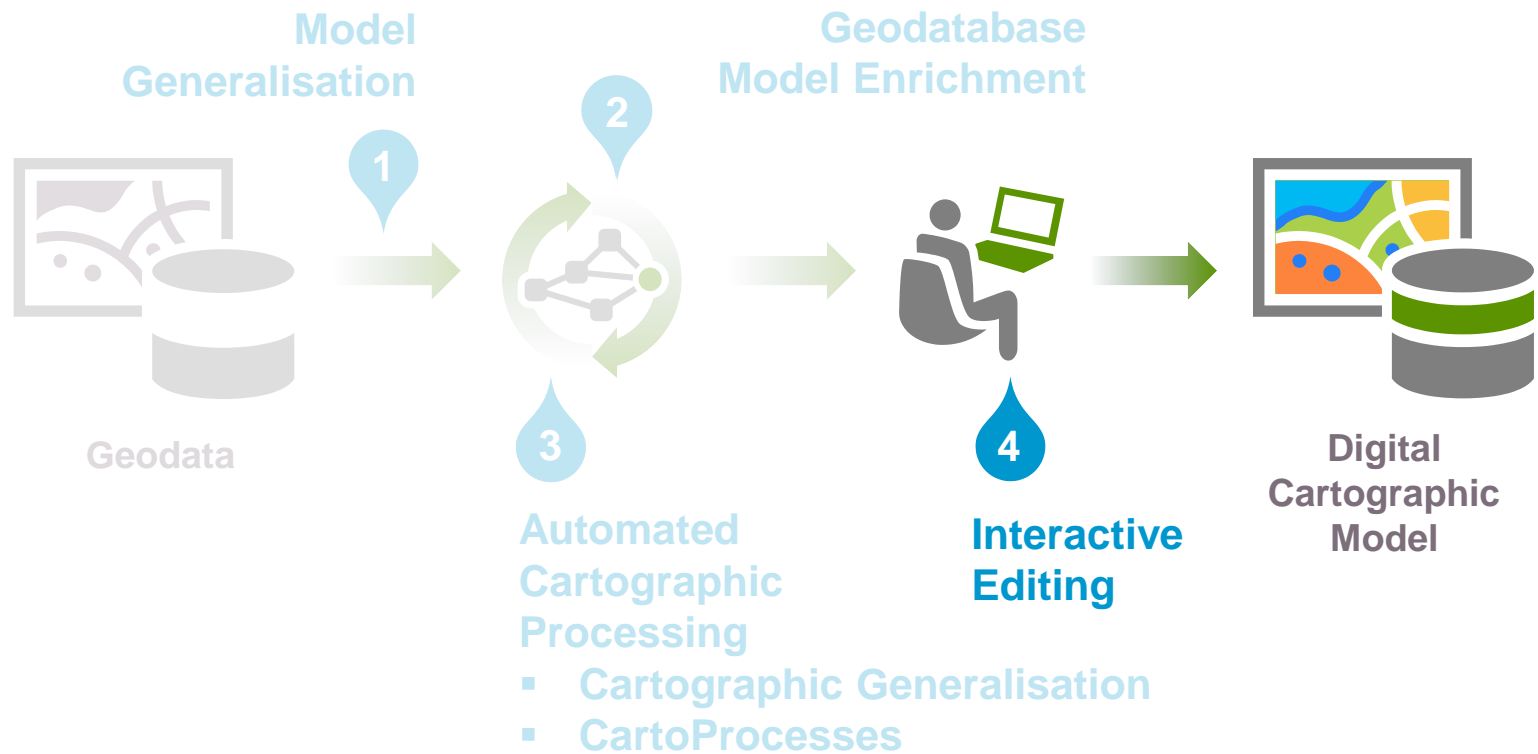
Before



After

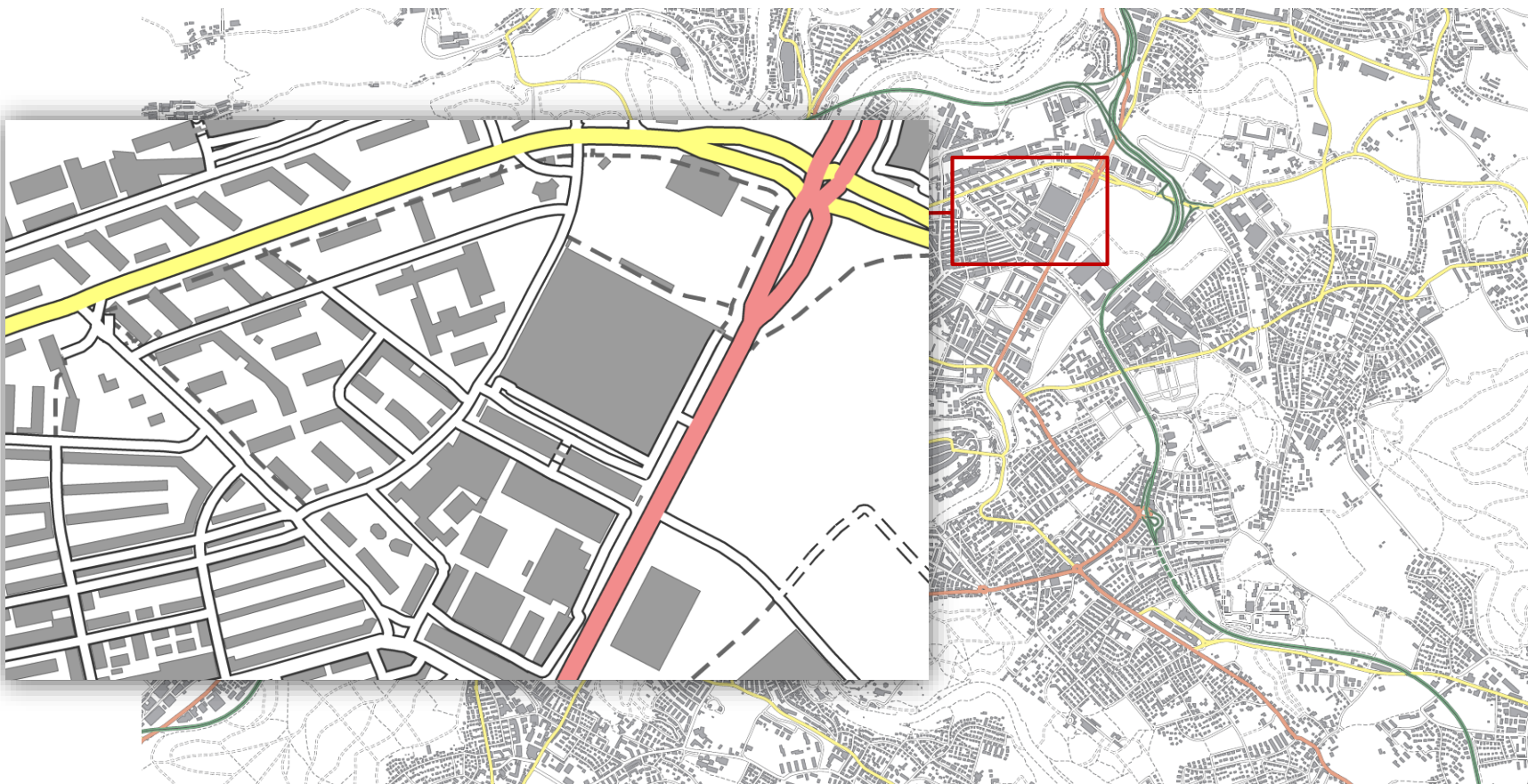
4 Interactive Editing

Quality Control



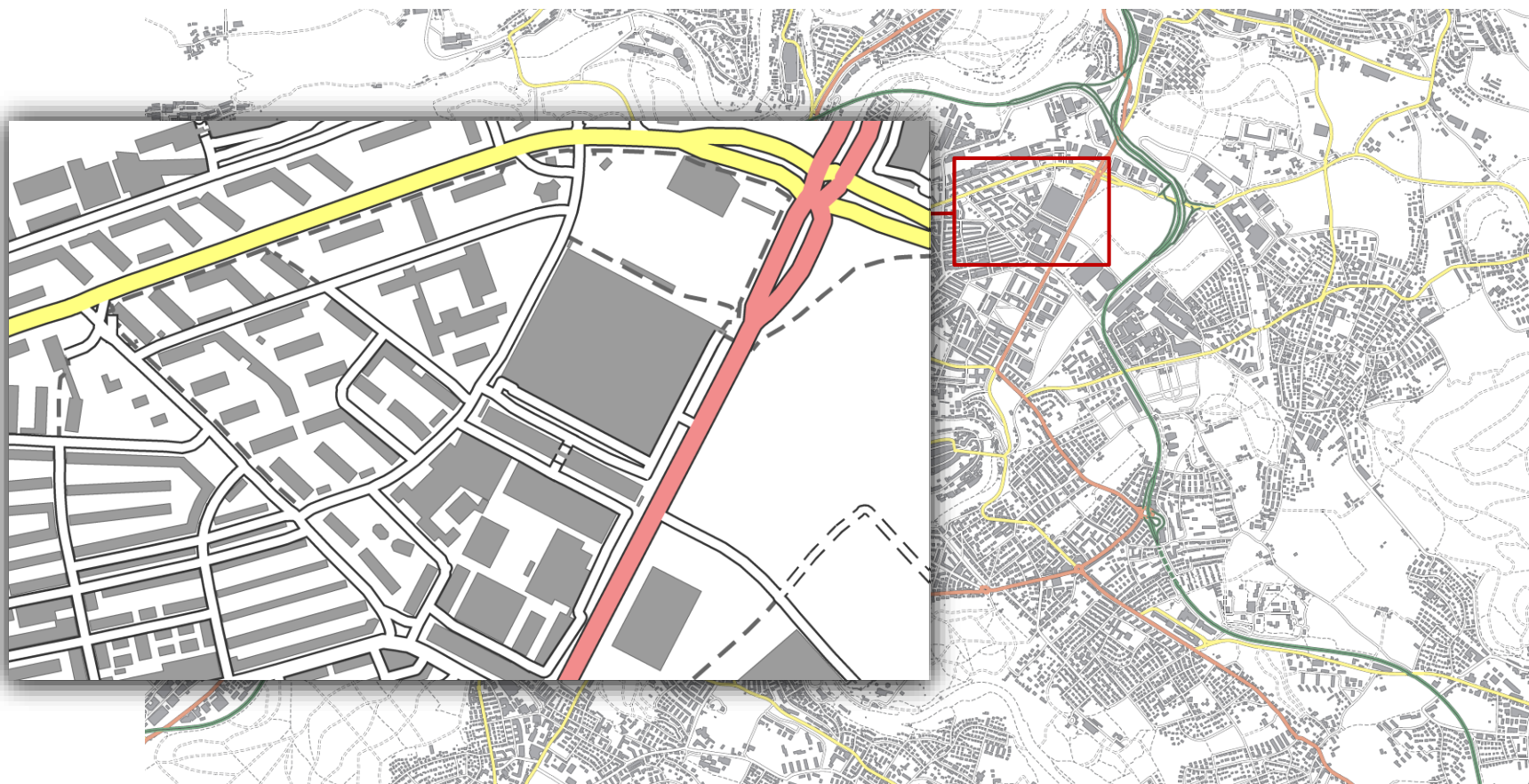
4 Interactive Editing

+ One-Click Editing Tools for efficiency



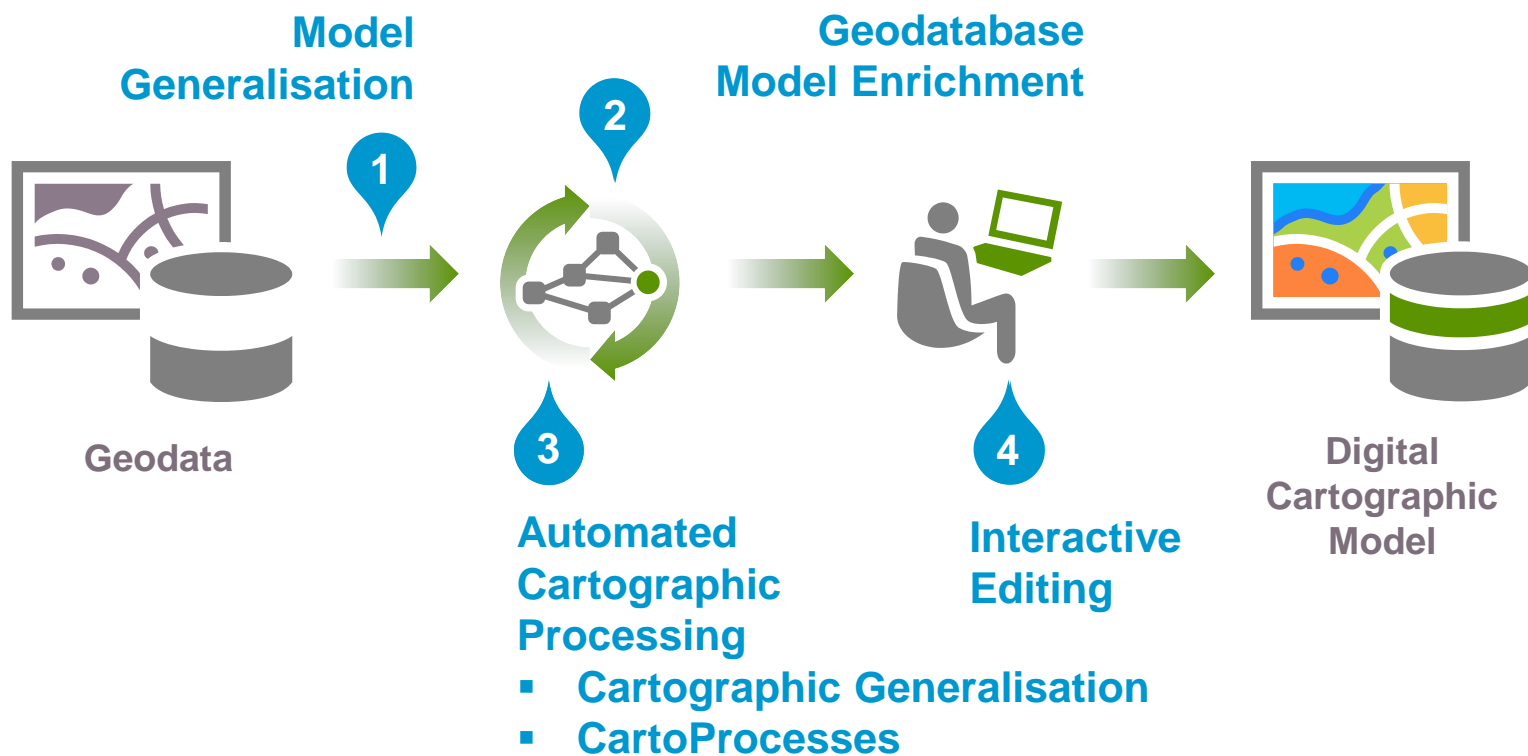
4 Interactive Editing

+ One-Click Editing Tools for efficiency



Challenging Cartography within a single system

Quality Control



Takeaways!

+ **The Esri Platform offers:**

- > Model generalisation tools
- > Cartographic generalisation tools
- > Cartographic representations

+ **Esri Switzerland offers:**

- > Cartographic Project experience
- > A team of experienced cartographers
- > Specialised cartographic solutions

**Thank you for listening and have a
great Symposium**

**Any
Questions?**



Mark Wigley, Anna Vetter
Project Services

m.wigley@esri.ch, a.vetter@esri.ch